



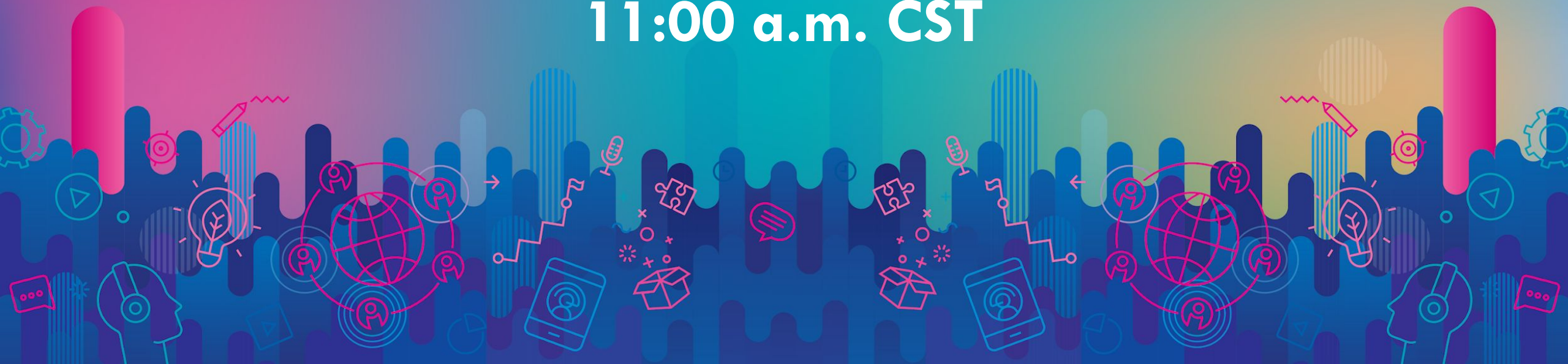
LAUNCH NEBRASKA



COVID-19 Update

February 1, 2022

11:00 a.m. CST



Agenda

- Welcome and Overview - Commissioner
- Public Health Updates - Dr. Matthew Donahue
- New School Testing Program - Andrew Delicata



Kids Vaccinated

114,478

kids fully vaccinated



18.5% of kids K-6 grade
fully vaccinated

51.1% of kids 7-12
grade fully vaccinated

**Goal = increase # kids'
vaccinations/month**

*Fully Vaccinated Baseline Numbers by Age:
Total K-12: 82,321 | Ages K-6: 2.8% | Ages 7-12: 48.7%*

Provider Supported

221

health care providers signed
Statement of Support



16 communities represented
by Statement of Support

**Goal = grow support
statewide/month**

Message Maximized

340,453

Media/press impressions



\$41,953 earned
media/press value

**Goal = increase
impressions/month**



Amplifying the power against COVID-19 through vaccination for kids!

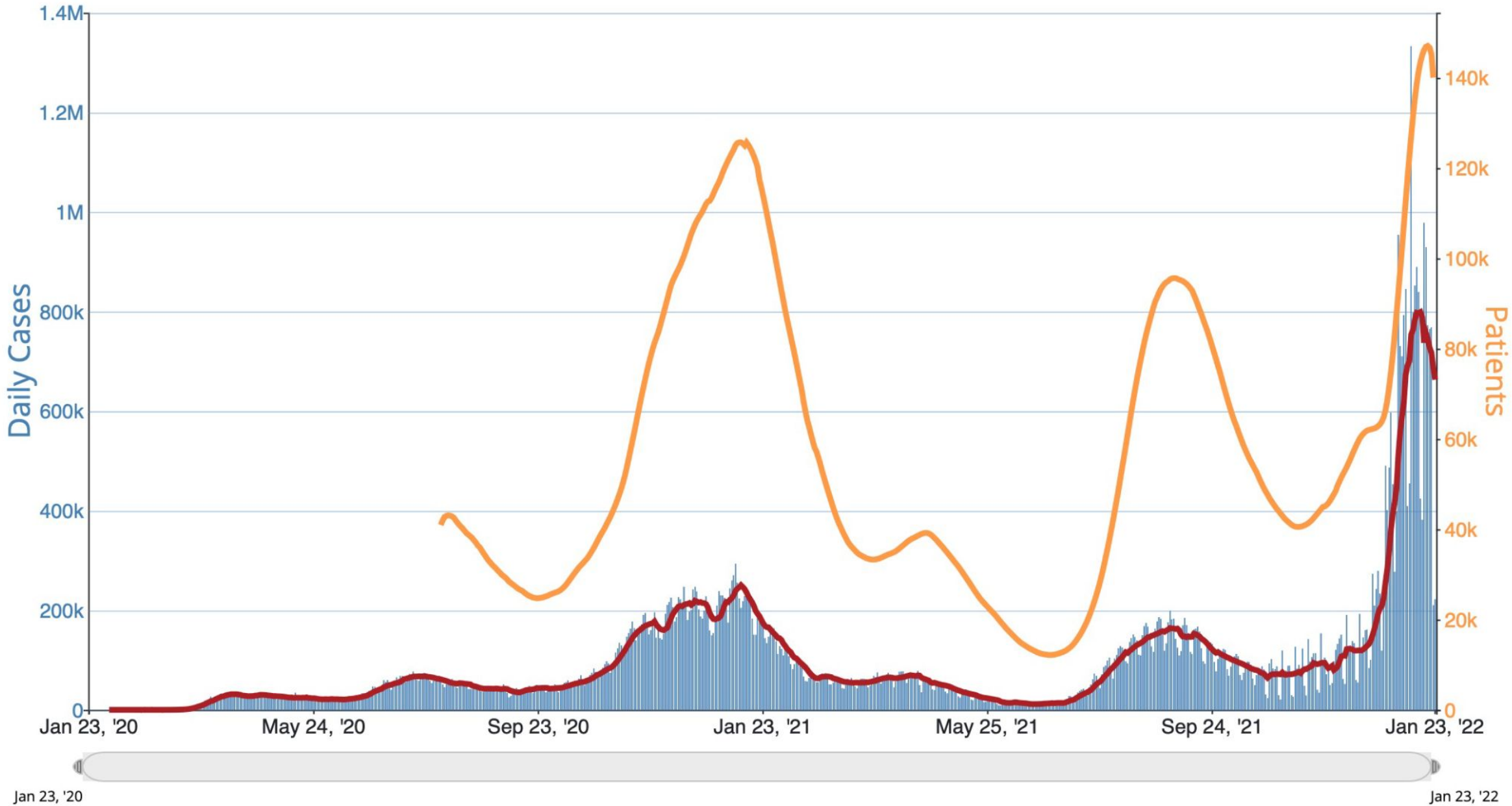
Progress shown as of 01/31/2022

Dr. Matthew Donahue

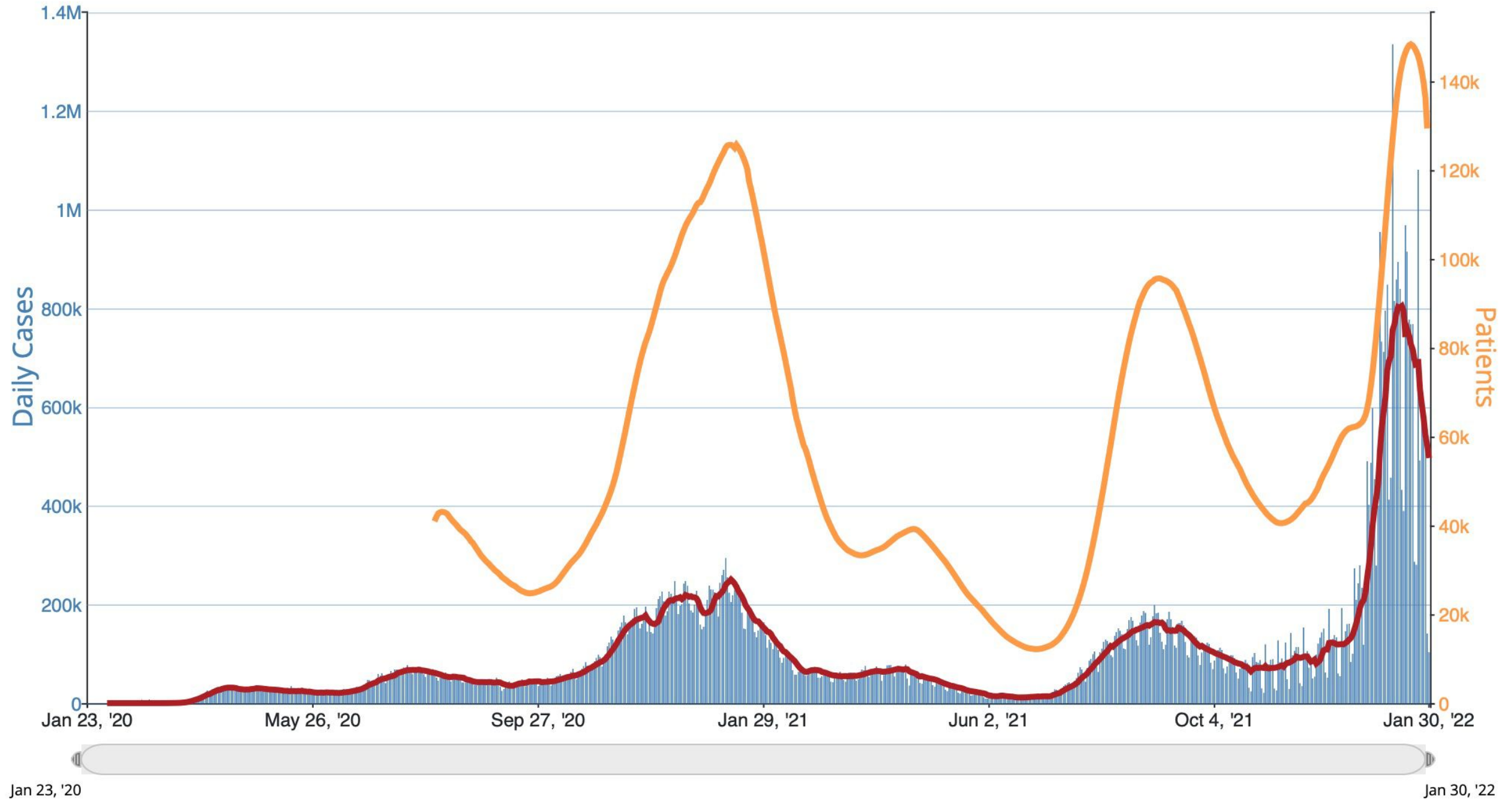
- State Epidemiologist
- MD from Iowa State University
- CDC experience in Epidemic Intelligence Service



Daily Trends in Number of Cases and 7-day Average of Current Hospitalized Patients with Confirmed COVID-19 in The United States Reported to CDC



Daily Trends in Number of Cases and 7-day Average of Current Hospitalized Patients with Confirmed COVID-19 in The United States Reported to CDC



New confirmed cases of Covid-19 in US, South Africa and UK

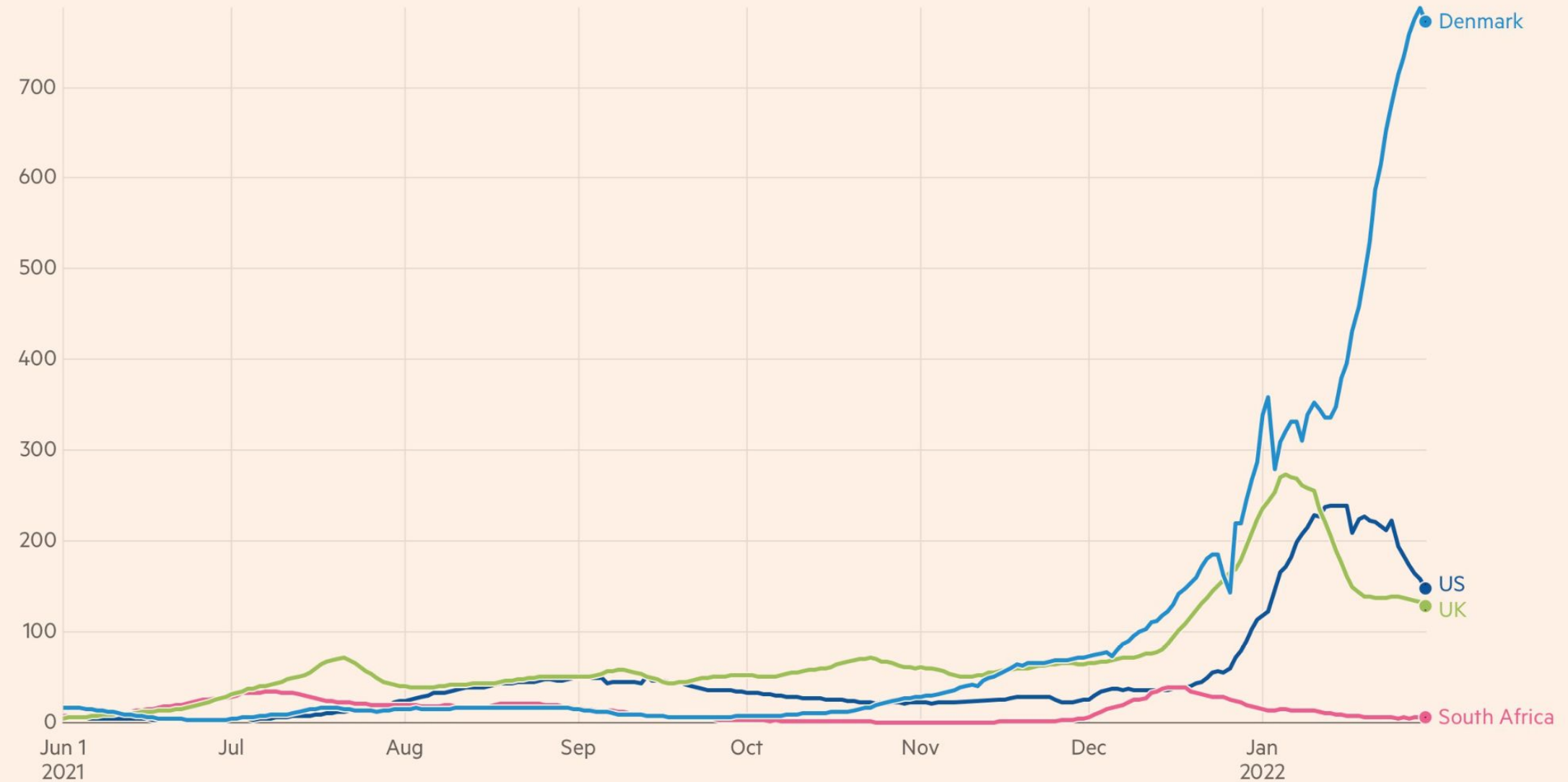
Seven-day rolling average of new cases (per 100k)



Source: Financial Times analysis of data from Johns Hopkins CSSE, World Health Organization, UK Government coronavirus dashboard, Government of Peru, Public Health France, Slovenian Ministry of Health and the Swedish Public Health Agency.
Data updated January 31 2022 1.58pm GMT. Interactive version: ft.com/covid19

New confirmed cases of Covid-19 in US, South Africa, UK and Denmark

Seven-day rolling average of new cases (per 100k)

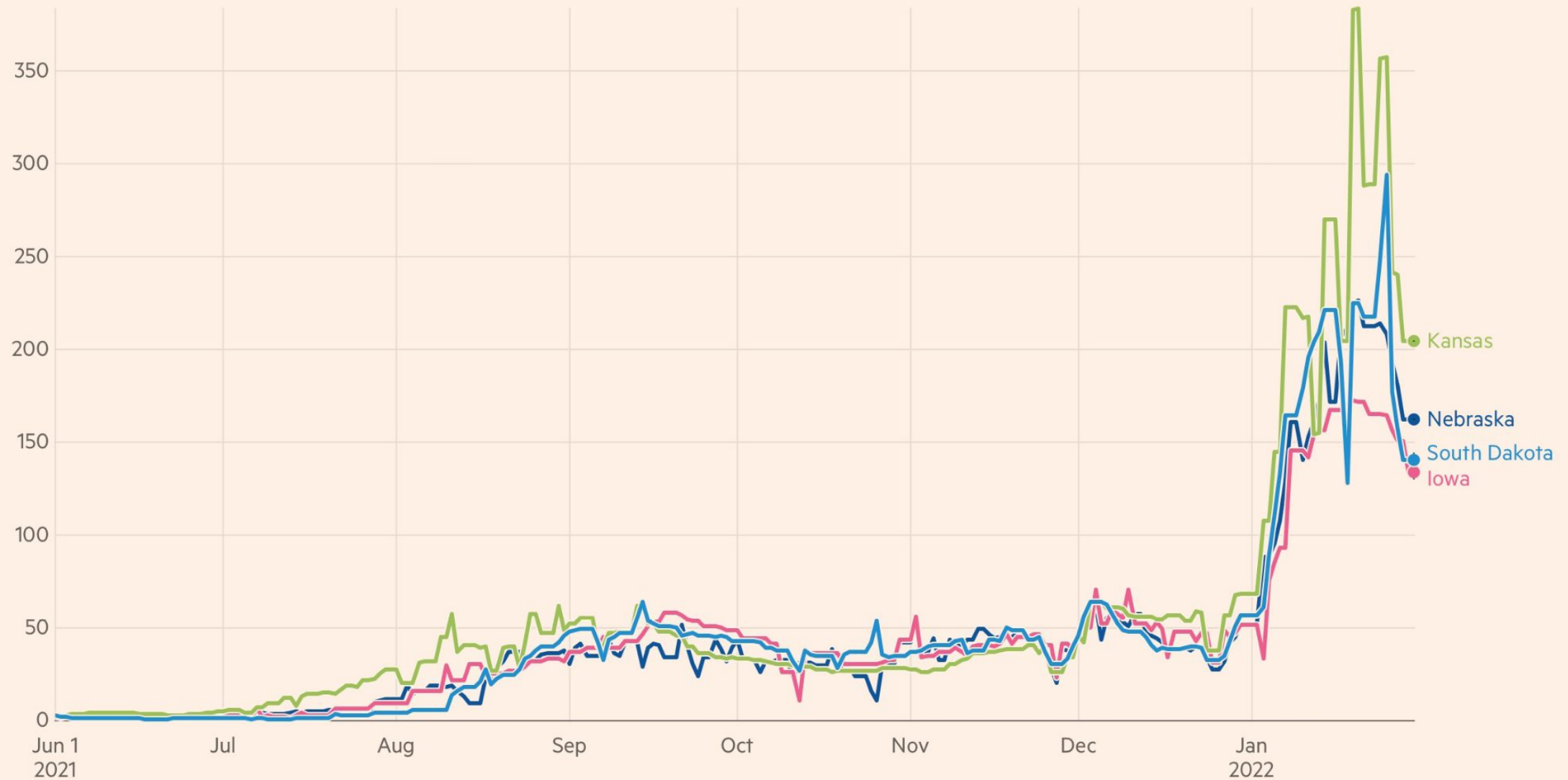


Source: Financial Times analysis of data from Johns Hopkins CSSE, World Health Organization, UK Government coronavirus dashboard, Government of Peru, Public Health France, Slovenian Ministry of Health and the Swedish Public Health Agency.
Data updated January 31 2022 1.58pm GMT. Interactive version: ft.com/covid19

FINANCIAL TIMES

New confirmed cases of Covid-19 in Nebraska, Iowa, Kansas and South Dakota

Seven-day rolling average of new cases (per 100k)



Source: Financial Times analysis of data from the Johns Hopkins CSSE.
Data updated January 31 2022 1.58pm GMT. Interactive version: ft.com/covid19

FINANCIAL TIMES

New confirmed cases of Covid-19 in Nebraska, Montana, Washington and Idaho

Seven-day rolling average of new cases (per 100k)

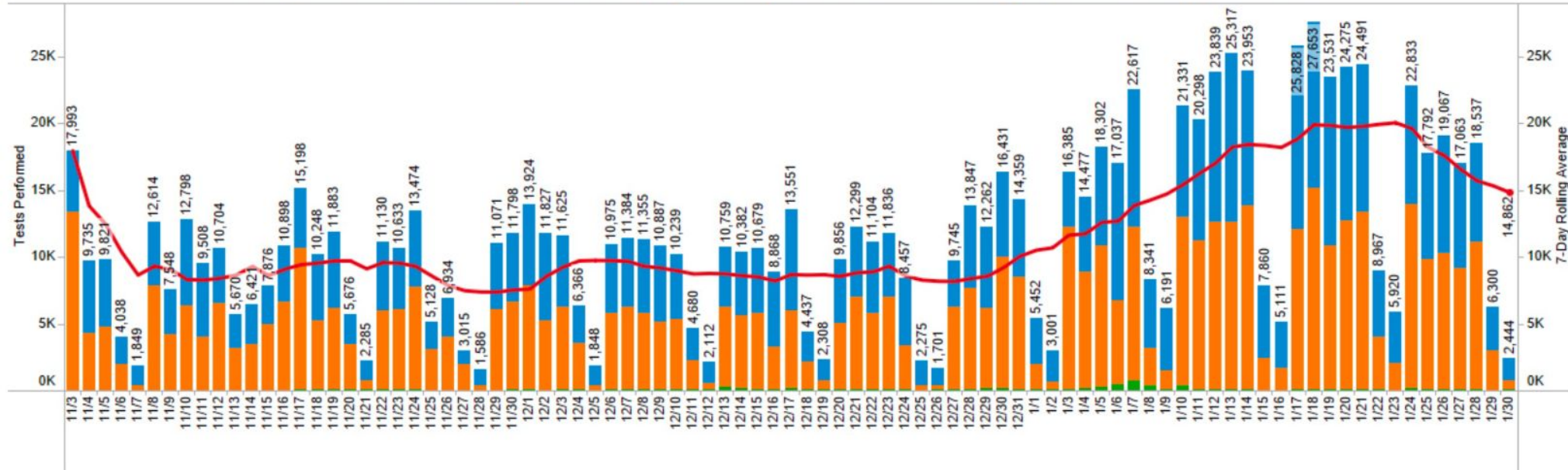


Source: Financial Times analysis of data from the Johns Hopkins CSSE.
Data updated January 31 2022 1.58pm GMT. Interactive version: ft.com/covid19

FINANCIAL TIMES

COVID-19 Tests

Daily number of tests performed, by lab report date and test type, last 90 days, Nebraska

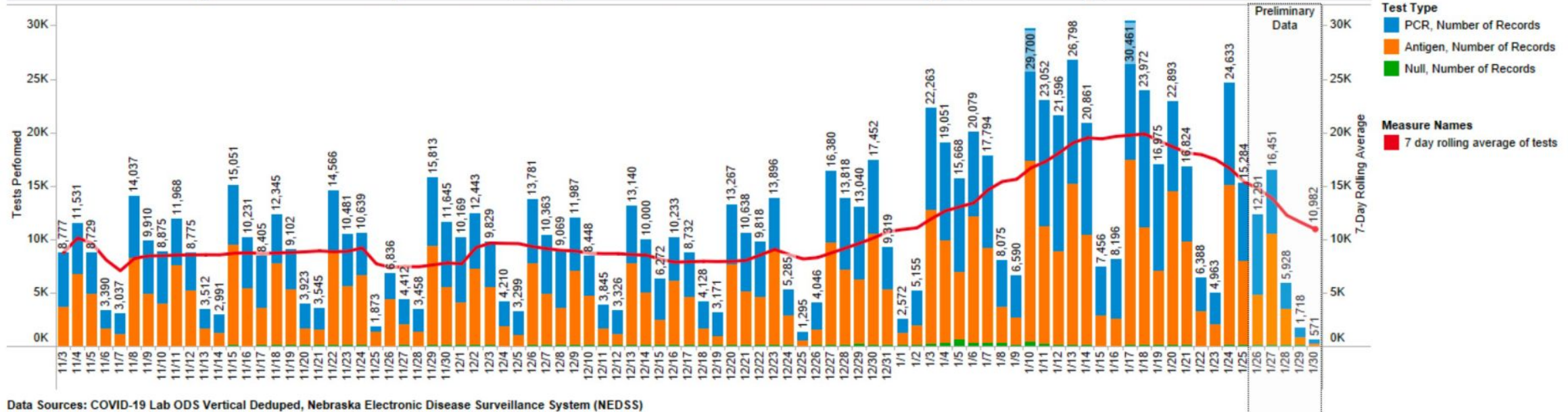


New Tests Reported
within past 7 days
104,036

Average Tests Per Day
7 day average of new tests reported
14,862
▼ -26.0% from previous 7 days

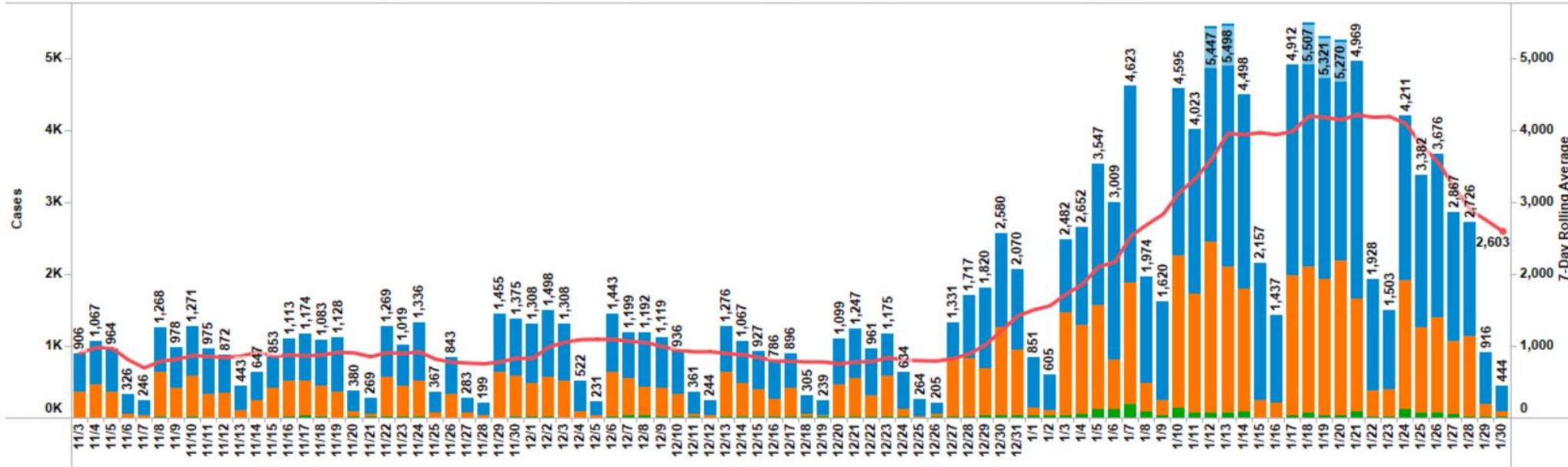
Percentage of PCR Test
within past 7 days
43.36%

Daily number of tests performed, by specimen collection date and test type, last 90 days, Nebraska



COVID-19 Cases

Daily new cases by lab report date, by test type, and last 90 days, Nebraska



New Cases Reported
reported in past 7 days

18,222

Average Cases Per Day
7 day average of new cases reported

2,603.1

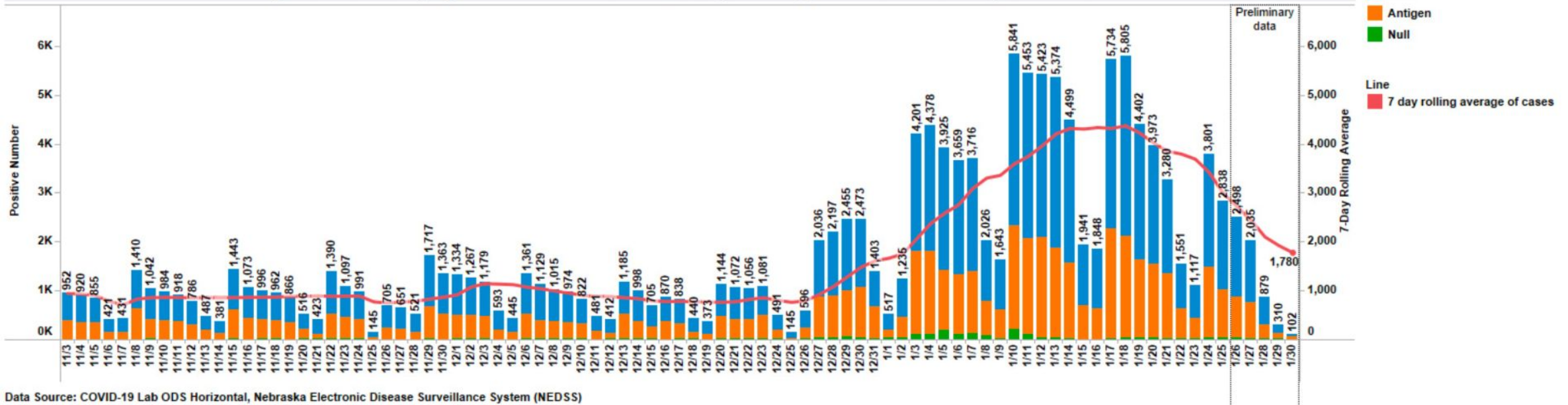
134.6 per 100K

▼ -38.0% from previous 7 days

Percentage of PCR
Cases
within past 7 days

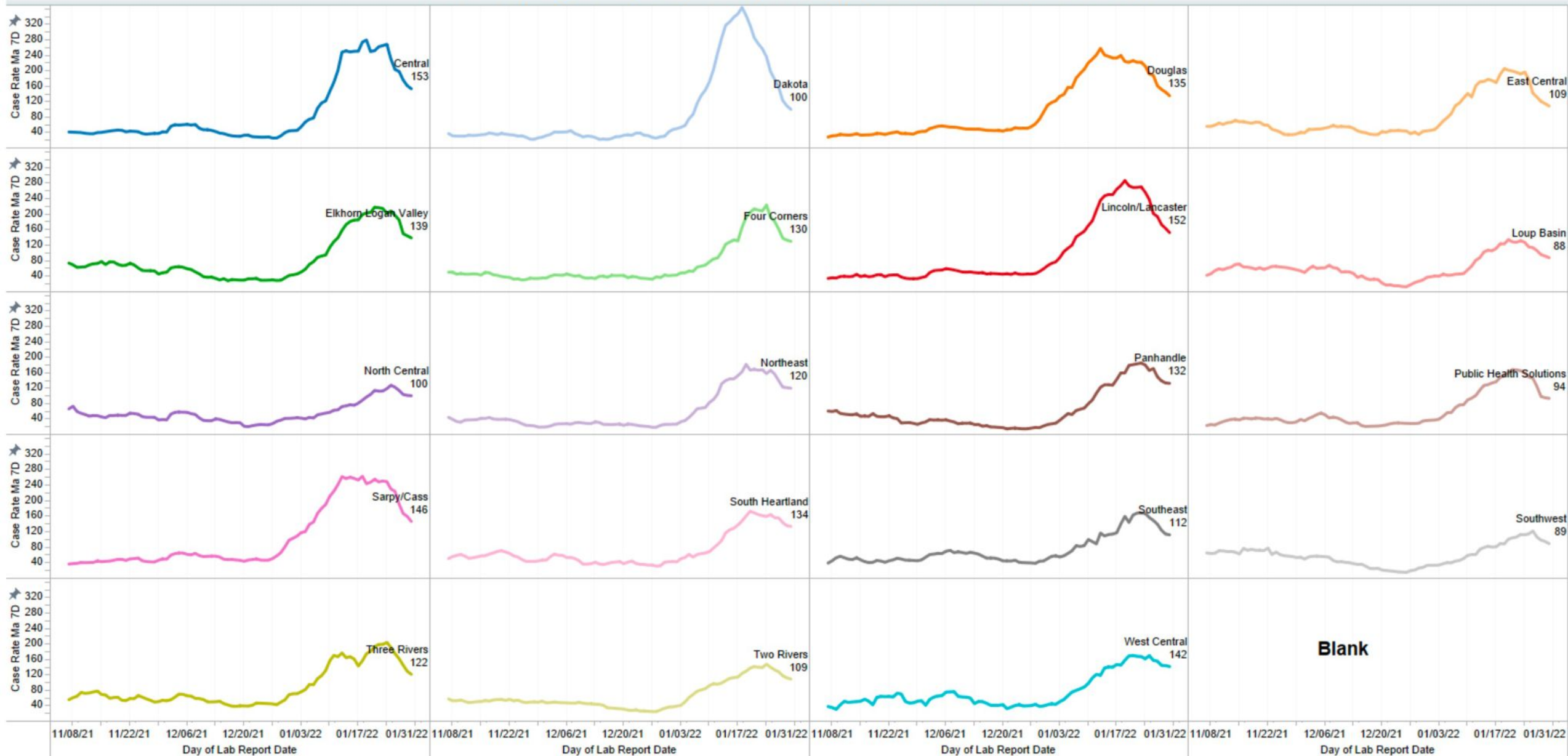
61.40%

Daily new cases by specimen collection date, by test type, and last 90 days, Nebraska



LHD Trends: Case Rates

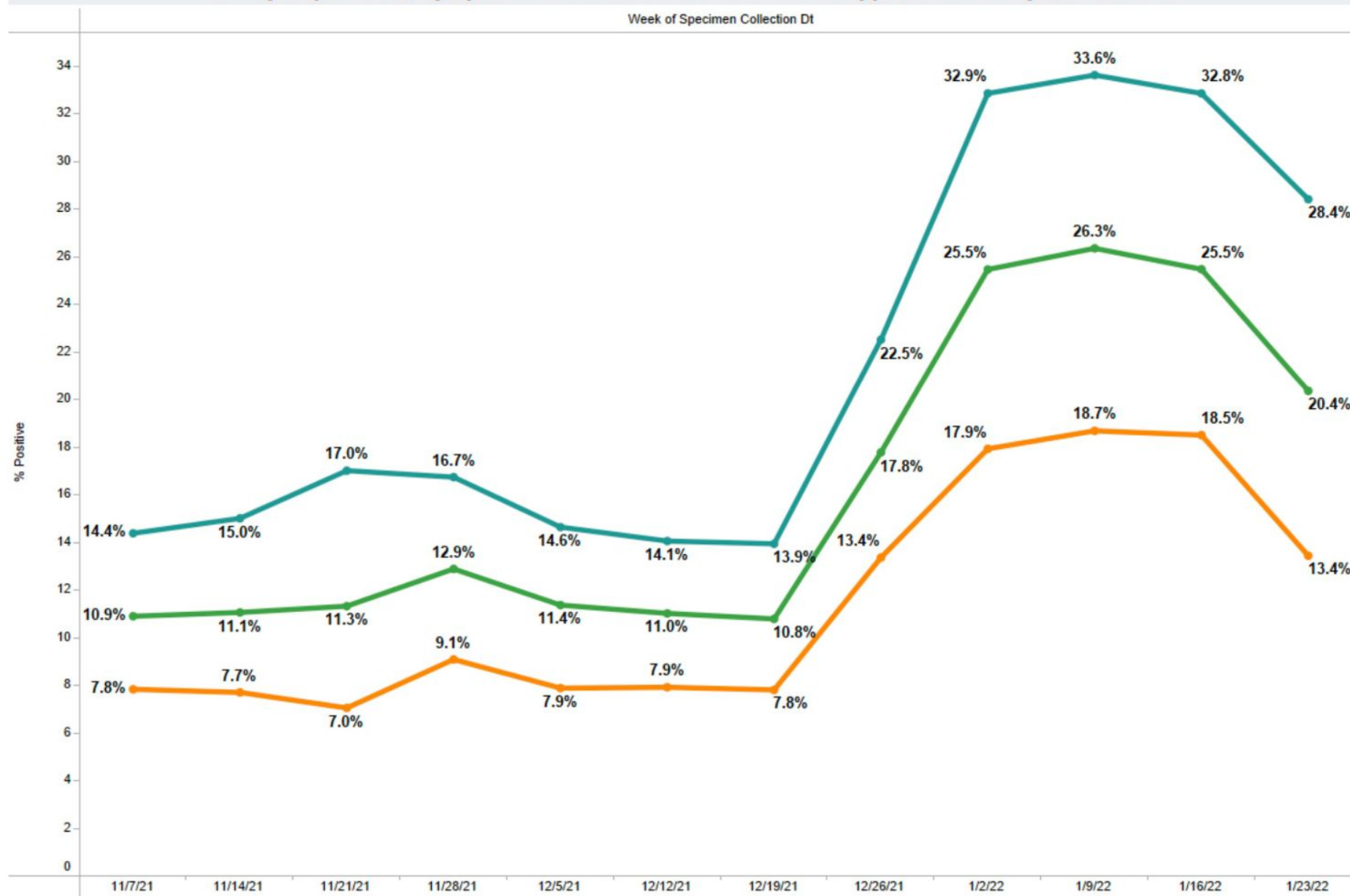
New cases/day/100K (7 day rolling average) by LHD, Nebraska, last 90 days



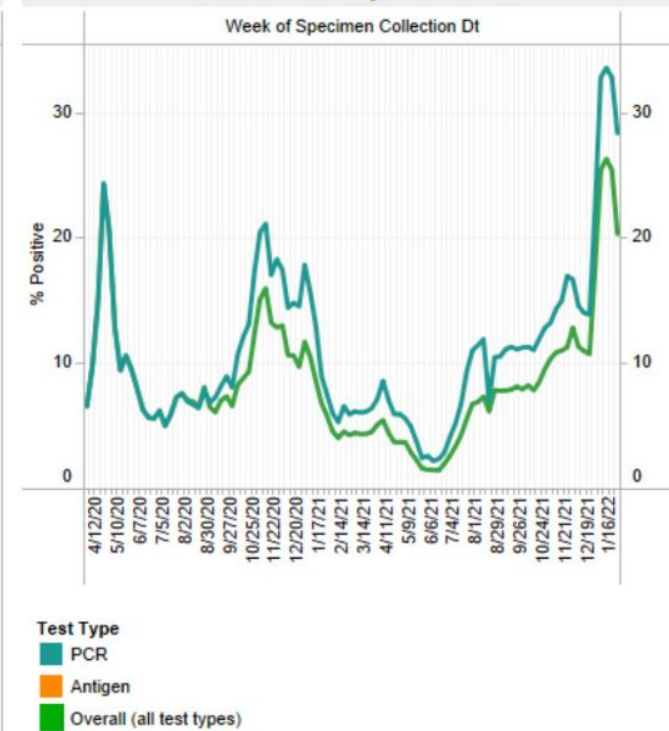
Data showing LHD case trend rate based of lab report date
Data Source: Nebraska Electronic Disease Surveillance System (NEDSS)

Test Positivity

Weekly % positive, by specimen collection date and test type, last 90 days, Nebraska

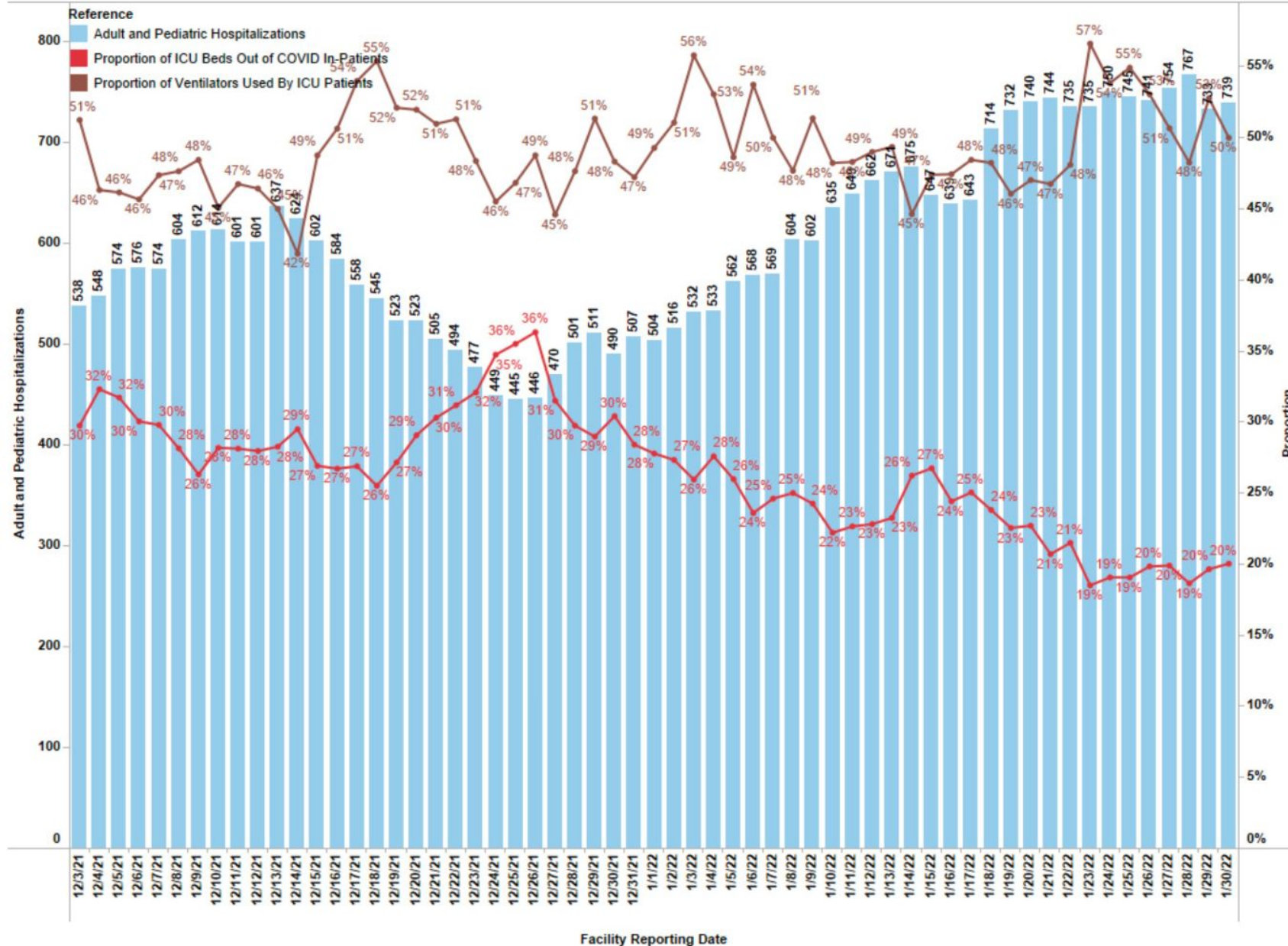


% Positivity Overall

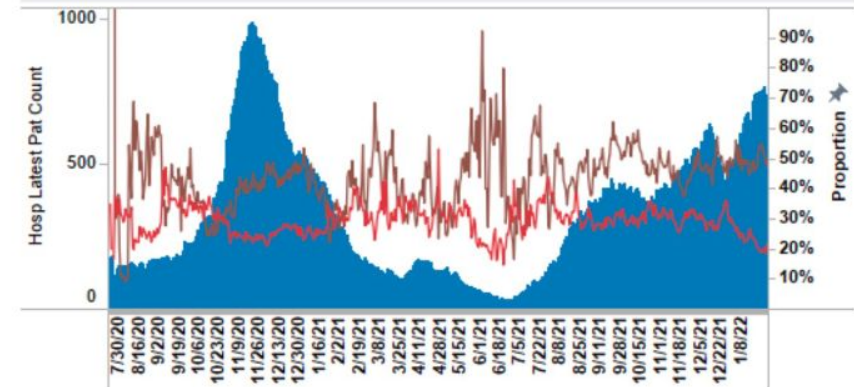


Active Hospitalizations

Active COVID-19 hospitalizations (confirmed cases) in last 60 days with proportion of ICU beds & ventilators used, by reporting date, Nebraska



Active COVID-19 hospitalizations (confirmed cases) with proportion of ICU beds & ventilators used, by reporting date, Nebraska



Active Hospitalizations

739

ICU Beds Used

148
20%

Ventilators Used

74
50%

About the Data

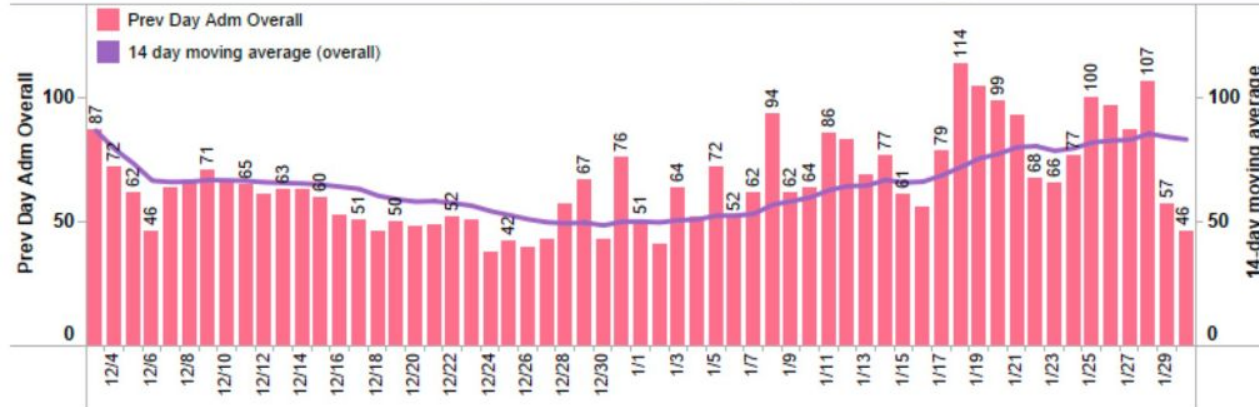
Data Source: EEI History Data extracted from Federal HHS Protect Data.

Data are preliminary and depends upon the number of facilities reporting to EEI History data. Data may differ from local sources and other statewide data.

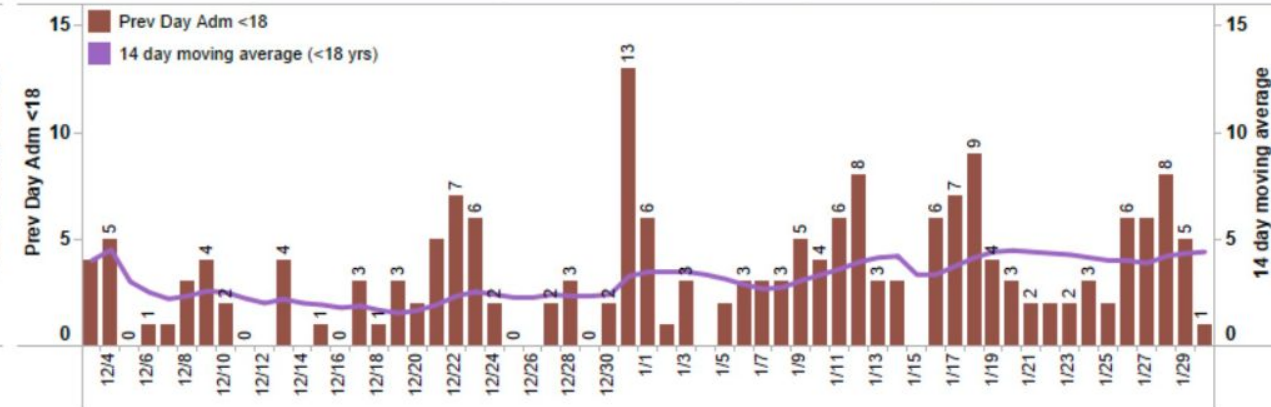
Proportion of ventilators used by ICU patients is the ventilators used by total ICU confirmed patients.

Daily New Hospitalizations (confirmed cases) by Age Group in Last 60 days

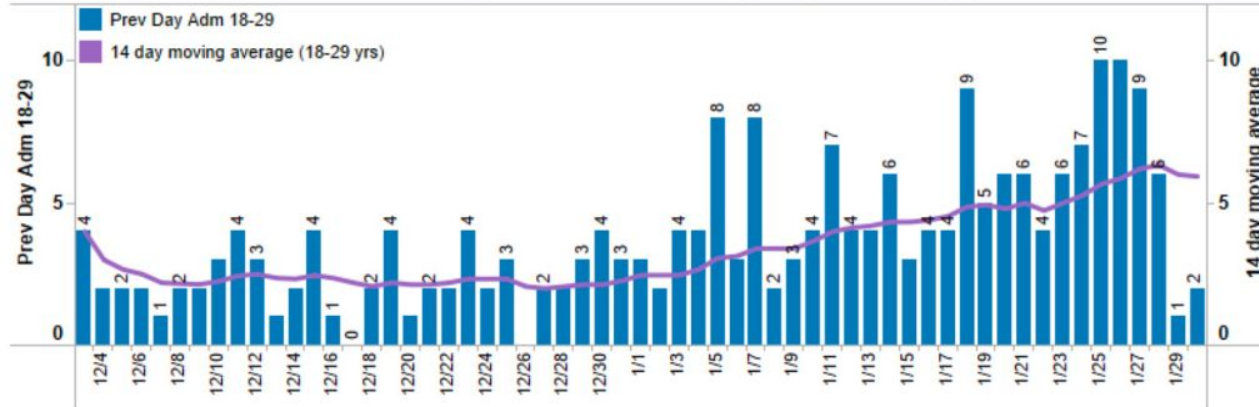
Daily new COVID-19 hospitalizations, all age group, last 60 days, Nebraska



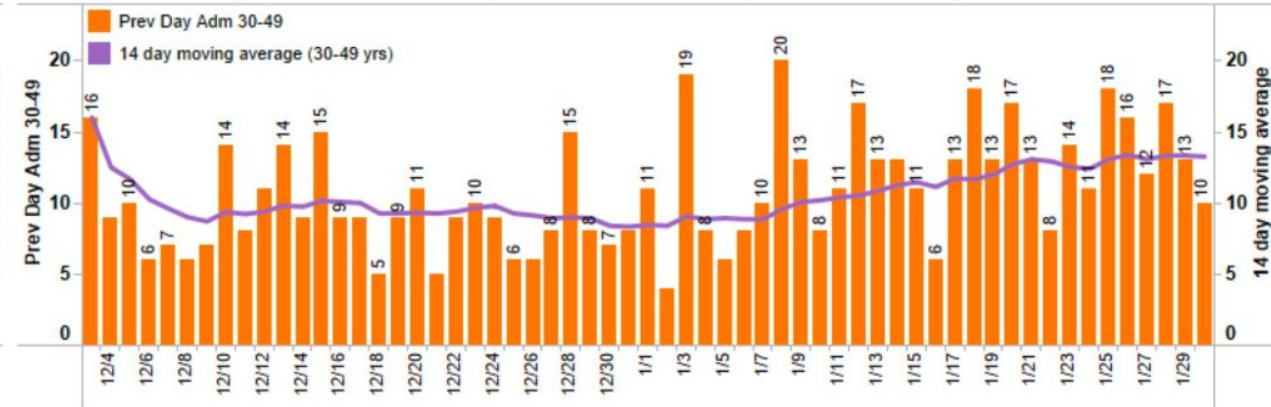
Daily new COVID-19 hospitalizations in <18 years, last 60 days, Nebraska



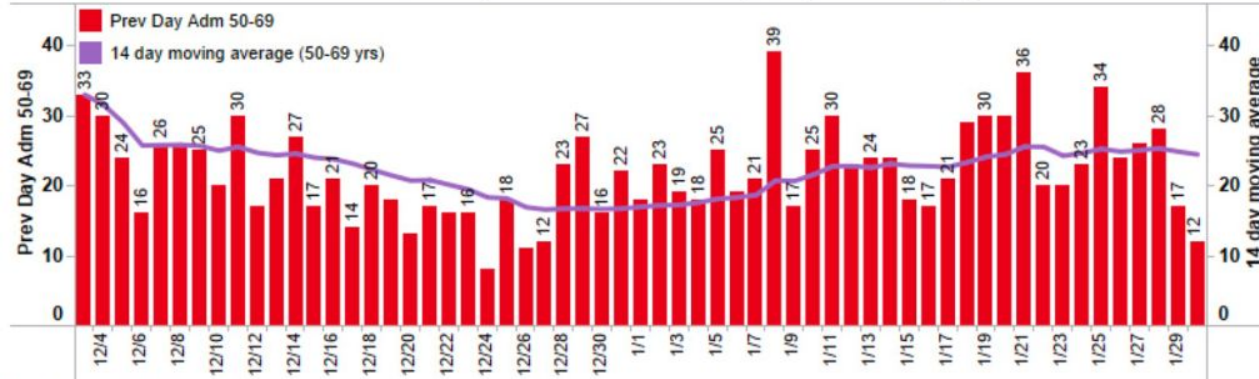
Daily new COVID-19 hospitalizations in 18-29 years, last 60 days, Nebraska



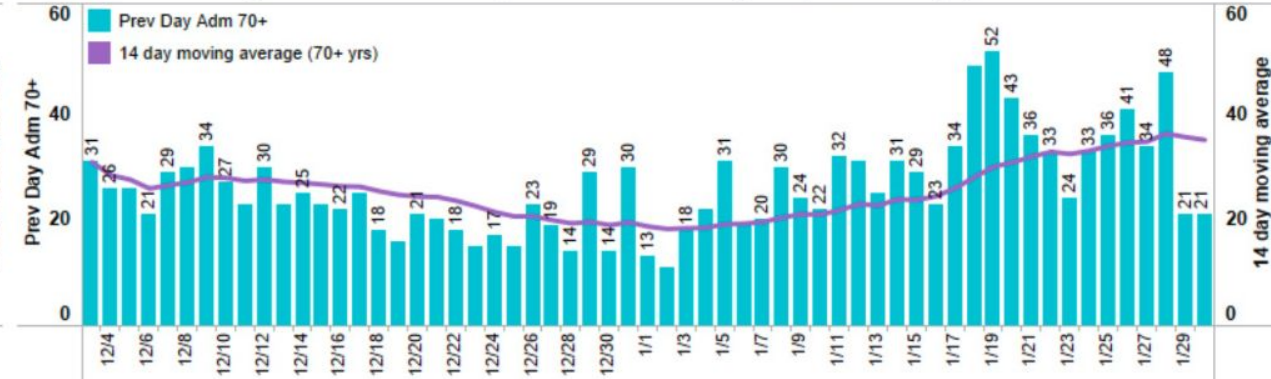
Daily new COVID-19 hospitalizations in 30-49 years, last 60 days, Nebraska



Daily new COVID-19 hospitalizations in 50-69 years, last 60 days, Nebraska

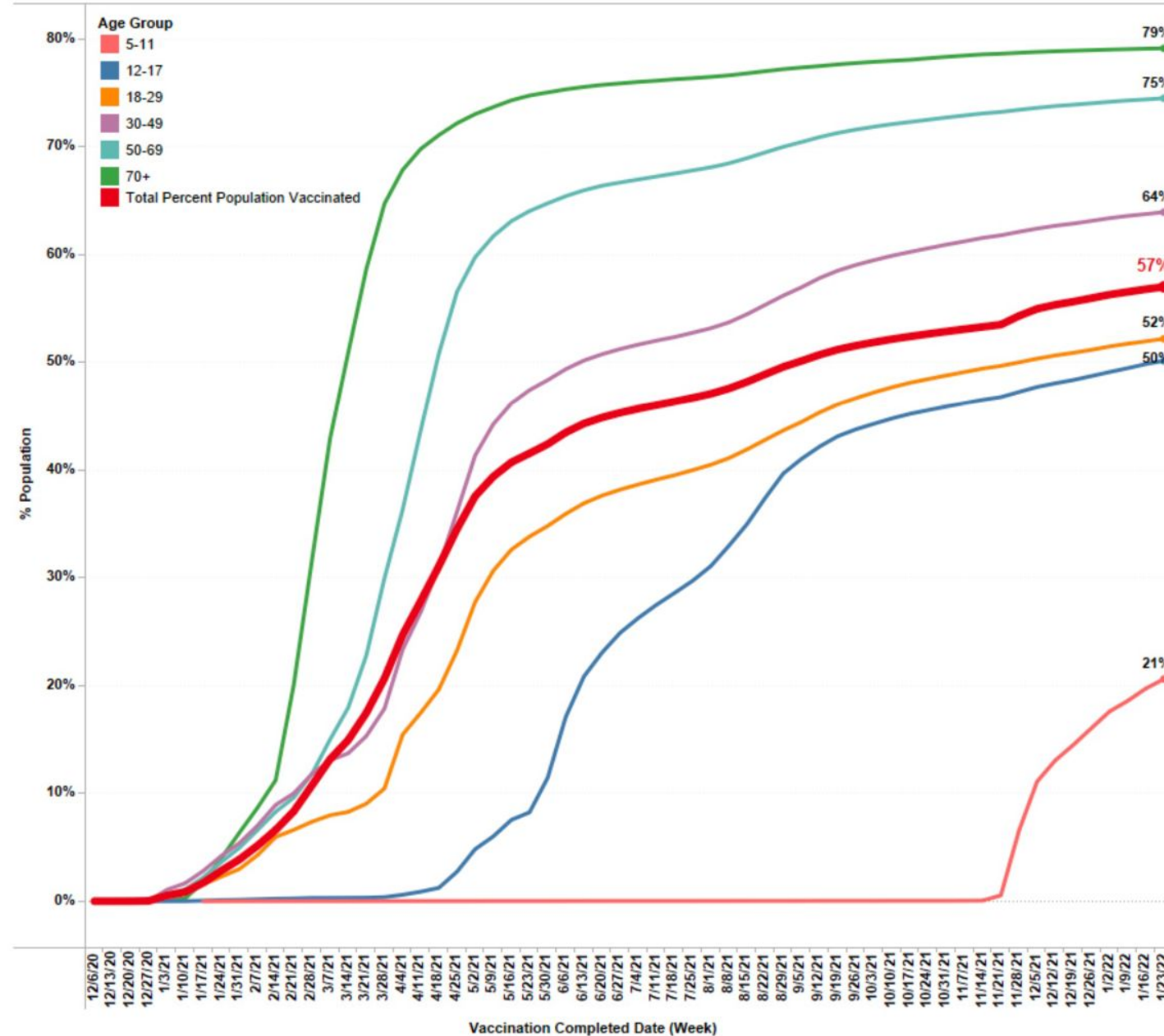


Daily new COVID-19 hospitalizations in 70+ years, last 60 days, Nebraska



Vaccinations

Cumulative % Population Fully Vaccinated Residents, by Age Group and Week, Nebraska
(Includes Pfizer 5-11 yr old fully vaccinated)



Total % Population Fully Vaccinated By LHD and Age Group
(Includes Pfizer 5-11 yr old fully vaccinated)

LHD short	5-11	12-17	18-29	30-49	50-69	70+	Grand Total
Central	13%	37%	48%	58%	73%	75%	51%
Dakota	4%	35%	47%	57%	72%	78%	48%
Douglas	29%	65%	64%	71%	80%	85%	63%
East Central	6%	26%	46%	58%	73%	78%	50%
Elkhorn Logan Valley	8%	30%	44%	56%	73%	79%	51%
Four Corners	12%	33%	38%	57%	73%	80%	52%
Lincoln/Lancaster	30%	67%	54%	76%	84%	87%	64%
Loup Basin	5%	18%	28%	39%	56%	63%	40%
North Central	5%	18%	30%	39%	54%	67%	40%
Northeast	8%	25%	30%	47%	60%	69%	40%
Panhandle	8%	24%	31%	43%	59%	68%	41%
Public Health Solutions	12%	37%	43%	54%	72%	81%	53%
Sarpy/Cass	26%	62%	60%	64%	78%	84%	60%
South Heartland	6%	24%	38%	52%	69%	77%	48%
Southeast	14%	40%	43%	55%	71%	74%	53%
Southwest	6%	17%	28%	40%	59%	67%	41%
Three Rivers	18%	43%	51%	62%	75%	80%	57%
Two Rivers	11%	37%	40%	57%	71%	78%	50%
West Central	6%	21%	31%	43%	59%	65%	41%
Grand Total	21%	50%	52%	64%	75%	79%	57%

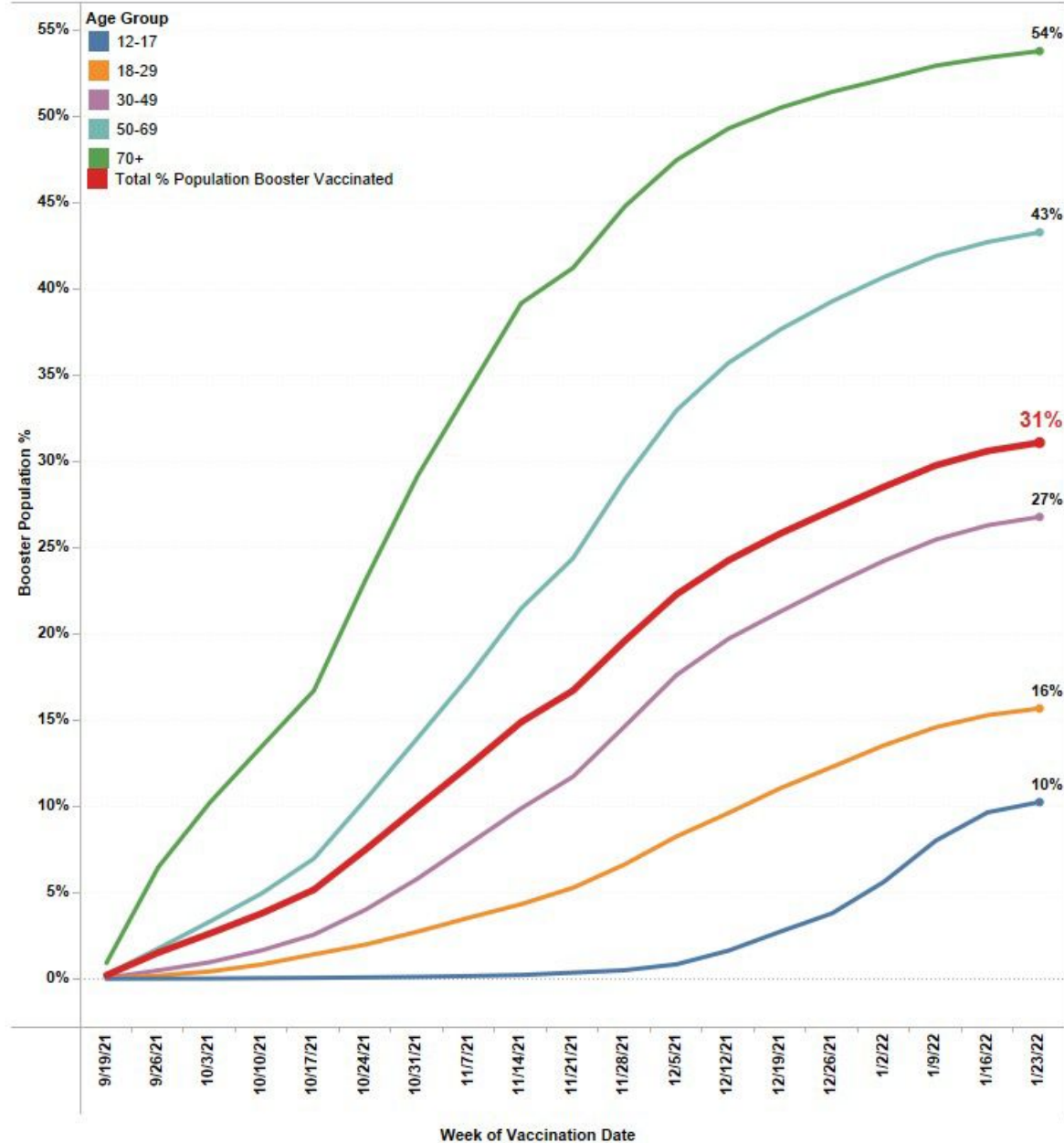
About the Data

Data Sources: Numerator is NESIIS Extract. Population data from CDC Bridged Race Population Estimates, 2019. Fully vaccinated is defined here as Nebraska residents who have received their 2nd dose of a 2 dose vaccine, or 1st dose of a 1 dose vaccine.

Note: Data are preliminary and may differ from local, state, or federal sources. Vaccinations administered outside the state of Nebraska or by federal partners (DOD, VA, IHS) are not included. Other vaccination data sources may use different population data to calculate rates. Therefore, vaccination rates here may be lower than rates posted on other sites.

Vaccinations (Boosters)

Cumulative % Population with Additional Booster Dose Administered, by Age Group and Week, Nebraska



Total % Population with Additional Booster Dose Administered, by LHD and Age Group

LHD short	12-17	18-29	30-49	50-69	70+	Grand Total
Central	5%	11%	19%	40%	51%	26%
Dakota	3%	6%	11%	32%	44%	19%
Douglas	15%	21%	32%	48%	58%	35%
East Central	2%	9%	18%	39%	51%	26%
Elkhorn Logan Valley	3%	9%	18%	39%	53%	27%
Four Corners	5%	9%	20%	41%	57%	29%
Lincoln/Lancaster	16%	19%	37%	55%	63%	38%
Loup Basin	2%	7%	13%	31%	43%	23%
North Central	2%	7%	13%	27%	42%	22%
Northeast	2%	8%	17%	32%	44%	22%
Panhandle	2%	6%	13%	29%	42%	21%
Public Health Solutions	4%	11%	20%	43%	58%	31%
Sarpy/Cass	15%	19%	28%	44%	52%	32%
South Heartland	3%	9%	19%	40%	55%	28%
Southeast	6%	10%	21%	42%	54%	30%
Southwest	1%	6%	11%	30%	44%	22%
Three Rivers	7%	14%	25%	45%	58%	33%
Two Rivers	4%	8%	19%	37%	52%	25%
West Central	2%	6%	13%	30%	43%	21%
Grand Total	10%	16%	27%	43%	54%	31%

About the Data

Data Sources: Numerator is NESIIS Extract. Population data from CDC Bridged Race Population Estimates, 2019. Data are preliminary and may differ from local, state, or federal sources. Vaccinations administered outside the state of Nebraska or by federal partners (DOD, VA, IHS) are not included. Other vaccination data sources may use different population data to calculate rates. Therefore, vaccination rates here may be lower than rates posted on other sites.

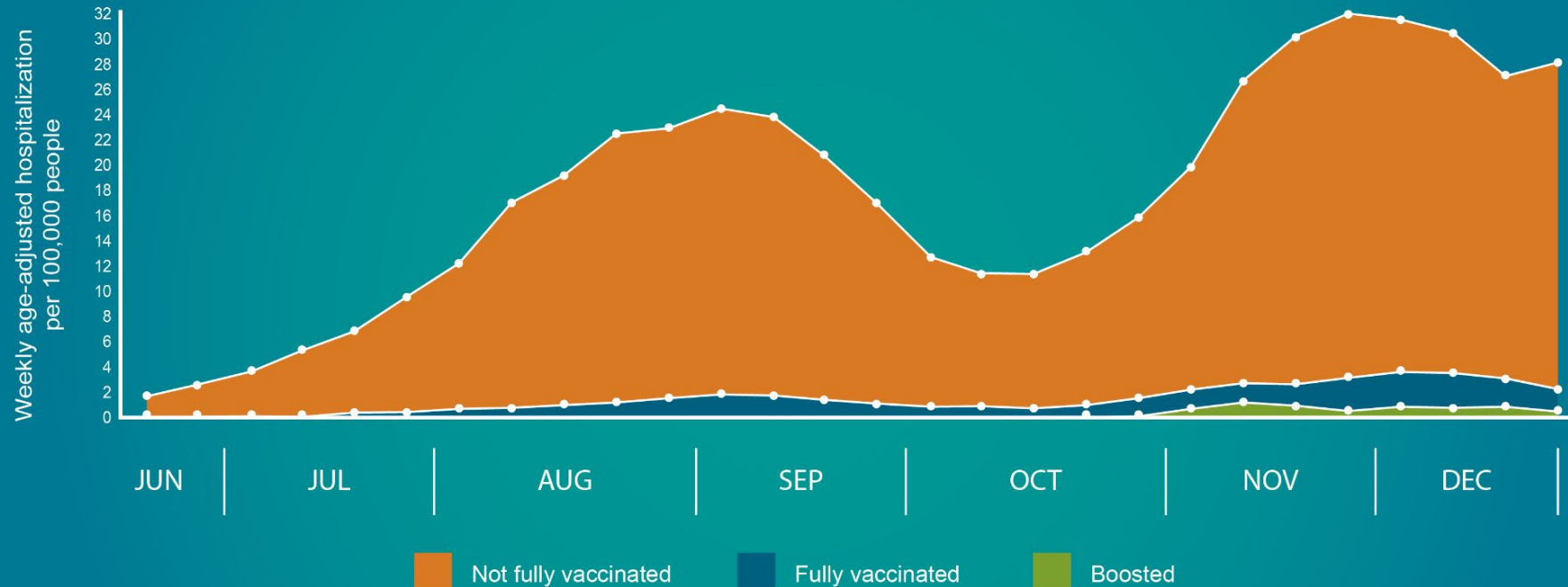
Booster dose is administered when a person has completed their vaccine series and protection against virus has decreased over time. According to CDC, individuals who received a Pfizer-BioNTech or Moderna vaccine the following populations are eligible for a booster shot at 6 months or more after their initial series -> 65 yr age group, >18 yrs living in long-term care setting, underlying medical conditions, residents in high-risk settings. For individuals, who received Janssen vaccine, booster shots are recommended for >18 yrs who were vaccinated two months ago. The hete..

IN DECEMBER...

PEOPLE WHO WERE FULLY VACCINATED (BUT NOT YET BOOSTED) WERE **11X LESS LIKELY** TO BE HOSPITALIZED FOR COVID-19
PEOPLE WHO WERE BOOSTED WERE **46X LESS LIKELY** TO BE HOSPITALIZED FOR COVID-19

...THAN PEOPLE WHO WERE NOT FULLY VACCINATED

COVID-19 hospitalization rates by vaccination status in Nebraska, 2021



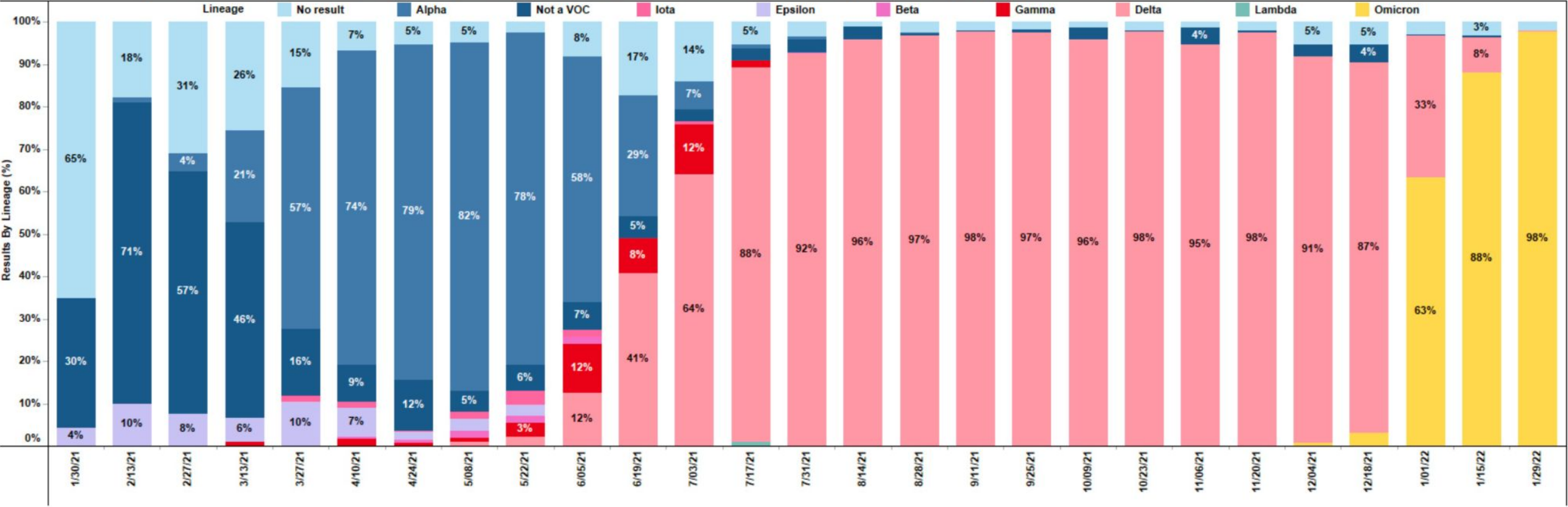
Hospitalizations: COVID-19 hospitalizations were identified from healthcare encounter data obtained from the State Health Information Exchange (CyncHealth), which were matched with Nebraska State Immunization Information System (NESIIS) vaccination data. We estimate this data source contains 60-70% of all COVID-19 hospitalizations in Nebraska.

Fully vaccinated: Fully vaccinated is defined as ≥ 14 days after the second dose of a two-dose vaccine or first dose of a single-dose vaccine. Not fully vaccinated includes individuals either partially vaccinated (i.e., not fully vaccinated as per the definition) or not having ever received a COVID-19 vaccine. Fully vaccinated excludes those who went on to receive a booster.

Boosted: Defined as ≥ 14 days after receiving a 3rd dose (for those who completed an mRNA primary series) or a 2nd dose (for those who started with J&J).

Sequencing Results By Lineage Performed By All Facilities

Proportion of Sequencing Results by Lineage Among Residents in Nebraska (N=15,576) | By Specimen Collection Date, Since January-2021



Week of Specimen Collection Date

Strain	Grand ..	1/30/21	2/13/21	2/27/21	3/13/21	3/27/21	4/10/21	4/24/21	5/08/21	5/22/21	6/05/21	6/19/21	7/03/21	7/17/21	7/31/21	8/14/21	8/28/21	9/11/21	9/25/21	10/09/21	10/23/21	11/06/21	11/20/21	12/04/21	12/18/21	1/01/22	1/15/22	1/29/22
Delta	9,927								6	8	15	40	87	269	429	376	987	1,106	880	982	909	883	985	828	788	280	68	1
Alpha	2,145		2	8	46	204	446	482	545	298	70	28	9	3	3		1											
Omicron	1,710																							6	27	532	726	419
Not a VOC	779	7	123	105	99	56	52	73	33	24	8	5	4	9	15	12	4	2	7	29	3	37	3	26	38	2	3	
No result	702	15	31	57	55	55	41	32	32	10	10	17	19	16	16	4	27	23	16	13	19	13	22	48	49	26	27	9
Epsilon	162	1	17	14	12	37	41	11	19	10																		
Gamma	79				2		10	4	7	13	14	8	16	5														
Iota	42					5	9	2	11	12	2		1															
Beta	27						3	5	10	6	2				1													
Lambda	3													3														
Grand Total	15,576	23	173	184	214	357	602	609	663	381	121	98	136	305	464	392	1,019	1,131	903	1,024	931	933	1,010	908	902	840	824	429

Data Source: COVID-19 Whole Genome Sequencing Lab Reports, Nebraska Electronic Disease Surveillance System (NEDSS)

COVID Testing in Nebraska Schools

CLIA Waiver & Reporting Requirements

January 2022

NEBRASKA

Good Life. Great Mission.

DEPT. OF HEALTH AND HUMAN SERVICES

Helping People Live Better Lives.

Agenda

1. Testing Options
2. Clinical Laboratory Improvement Amendments of 1988 (CLIA)
3. Reporting
4. Next Steps / Contacts
5. Q & A

NEBRASKA

Good Life. Great Mission.

DEPT. OF HEALTH AND HUMAN SERVICES

Helping People Live Better Lives.

School Outbreak Testing Options

	NPHL	Battelle Group	CDC	Local Health Dept	eMed
Type	PCR (results in 1-3 days)	PCR (results in ~3 days)	BinaxNow Rapid Antigen	BinaxNow Rapid Antigen	BinaxNow Rapid Antigen
Source	Lab ships to schools	Battelle ships to School	CDC ships to School	School picks up from LHD	School picks up from LHD
Contact (see also last slide)	Local Health Department https://dhhs.ne.gov/lhd	Lindsey Rankin	Andrew Delicata	Local Health Department https://dhhs.ne.gov/lhd	Local Health Department https://dhhs.ne.gov/lhd
Administered by	Nurse or Trained Volunteer	Self / proctored	School	School	Self or online proctor
Interpreted by	Lab	Lab	School	School	Self or online proctor
Reported by	Lab	Lab	School – see reporting slide	School – see reporting slide	eMed (proctored)
CLIA Waiver?	No	No	Yes	Yes	No (if eMed proctors)
Storage	Collected supply refrigerated at 30-40°F	36-86°F	36-86°F	36-86°F	36-86°F
Time to Obtain	1-3 days after request	14 days after enrollment plus a 45-minute training	3-10 days after completing an online request form	<3 days, if available, after contacting your LHD	<3 days, if available, after contacting your LHD

Clinical Lab Improvement Amendments (CLIA)

The CLIA Program regulates labs testing human specimens and ensures they provide accurate, reliable, and timely patient test results no matter where the test is done.

- In order to do testing, the location/facility must be CLIA certified
- With a Certificate of Waiver (CoW), a facility can **only** perform tests listed on the application
- Nebraska has no additional licensure requirements
- To apply, submit the following forms to: DHHS.AcuteCareFacilities@Nebraska.gov
 - CMS 116: <https://www.cms.gov/Medicare/CMS-Forms/CMS-Forms/downloads/cms116.pdf>
 - CLIA Ownership Info Form: <http://dhhs.ne.gov/licensure/Documents/CLIAOwnershipInformation.pdf>
- Nebraska Laboratory
 - <http://dhhs.ne.gov/licensure/Pages/CLIA-Clinical-Labs.aspx>
- Cost: \$180 (DHHS can cover this)
- Timing: Average time is 14 days (allow at least 10 days before reaching out)

Reporting

- Email dhhs.epi@Nebraska.gov to request documents & instructions
- We will respond with the excel template, companion documents, and other guidance.
- Submit your testing results within 24 hours of testing to:
dhhs.epi@Nebraska.gov
- Positive results should be reported ASAP / same day
 - Call your LHD so they can assist (<https://dhhs.ne.gov/lhd>)

NEBRASKA

Good Life. Great Mission.

DEPT. OF HEALTH AND HUMAN SERVICES

Helping People Live Better Lives.

Next Steps

- Start the CLIA waiver process ASAP if you are interested
 - Quick Start Guide: <https://www.cms.gov/files/document/cms-clia-laboratory-quick-start-guide-remediated.pdf>
- DHHS will host a school nurse webinar next week, Tuesday, Feb 2 at 3:30 p.m. CST
- Contacts / Questions
 - General: Andrew Delicata, Andrew.Delicata@Nebraska.gov
 - NPHL: Jonathan Figliomeni, Jonathan.Figliomeni@Nebraska.gov
 - Battelle: Lindsey Rankin, rankinl@testedandprotected.org
 - LHD: <https://dhhs.ne.gov/lhd>
 - Reporting: Rebecca Fein, Rebecca.Fein@nebraska.gov
 - CLIA: DHHS.AcuteCareFacilities@Nebraska.gov



NEBRASKA

Good Life. Great Mission.

DEPT. OF HEALTH AND HUMAN SERVICES

Helping People Live Better Lives.

SMALL ACTIONS
X LOTS OF PEOPLE
= BIG CHANGE

Contact Andrew Delicata with questions at

Andrew.Delicata@Nebraska.gov



@NEDHHS



NebraskaDHHS



@NEDHHS

dhhs.ne.gov

NEBRASKA

Good Life. Great Mission.

DEPT. OF HEALTH AND HUMAN SERVICES

Helping People Live Better Lives.

Next Call

Tuesday, February 15, 2022 at 11 a.m. CST

Submit Topics/Questions: <https://forms.gle/op7ZRq3h3CmFz3hs7>

