

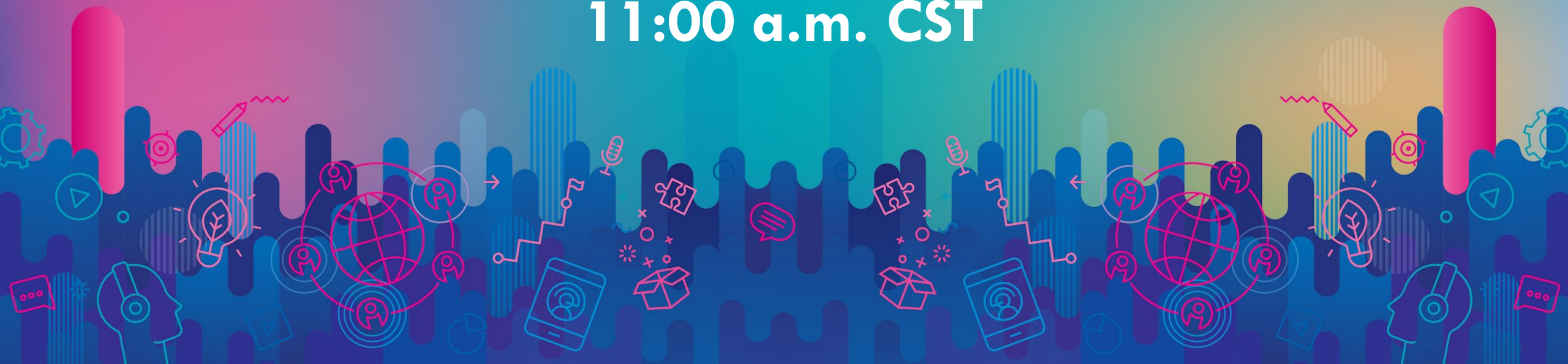


LAUNCH NEBRASKA



COVID-19 Update

September 28, 2021
11:00 a.m. CST

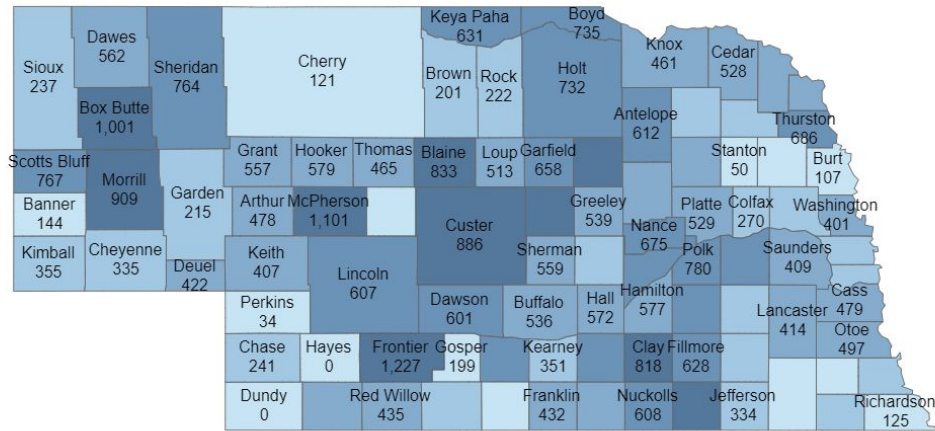


Agenda

- Welcome and Overview - Commissioner
- Public Health Updates - Dr. Alice Sato
- Question and Answer



State of the State



DHHS Portal:

-% of Population 12+ vaccinated

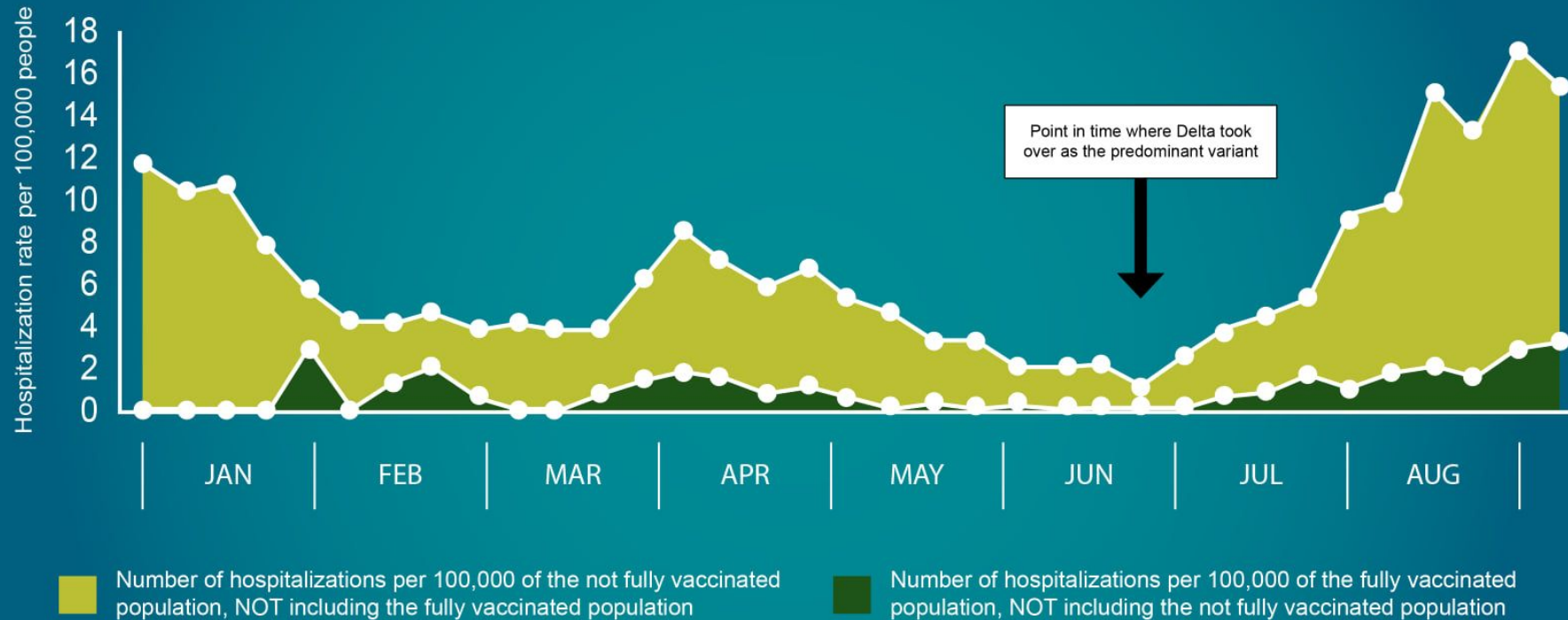
-Case Counts in Last 14 Days

-Overall COVID-19 cases



SINCE MID-AUGUST, PEOPLE WHO WERE NOT FULLY VACCINATED WERE **6X MORE LIKELY** TO BE HOSPITALIZED FOR COVID-19

Fully vaccinated and not fully vaccinated COVID-19 hospitalization rates per week in Nebraska



Fully vaccinated: Fully vaccinated is defined as ≥ 14 days after the second dose of a two-dose vaccine or first dose of a single-dose vaccine. Not fully vaccinated includes individuals either partially vaccinated (i.e., not fully vaccinated as per the definition) or not having ever received a COVID-19 vaccine.

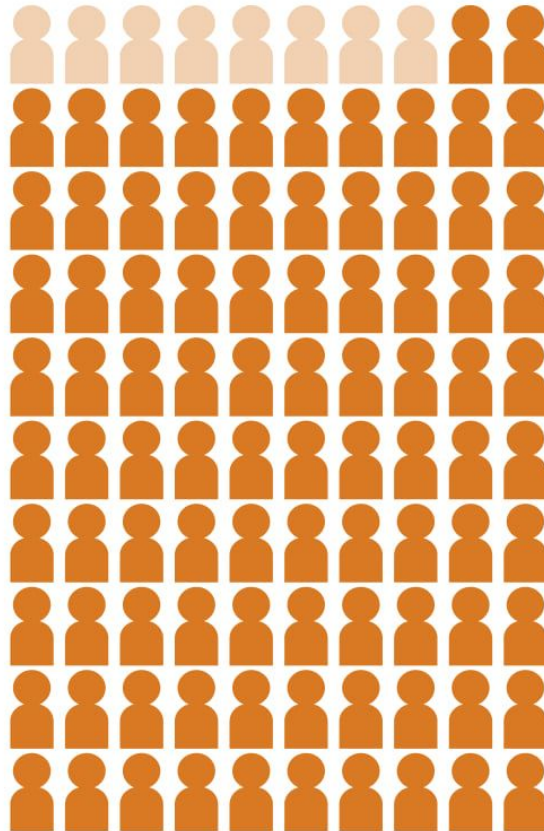
Hospitalizations: COVID-19 hospitalizations were identified from healthcare encounter data obtained from the State Health Information Exchange (CyncHealth), which were matched with Nebraska State Immunization Information System (NESIIS) vaccination data. We estimate this data source contains 60-70% of all COVID-19 hospitalizations in Nebraska.



INFECTIONS

92%

of COVID-19 infections since Jan. 1, 2021 were among people not fully vaccinated

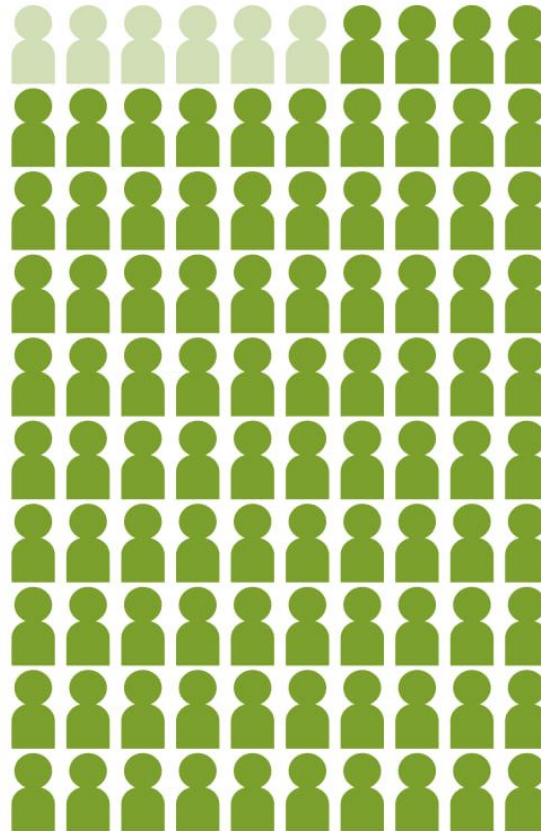


Cases: COVID-19 cases were identified from positive laboratory tests reported to the Nebraska Electronic Disease Surveillance System (NEDSS), which were matched with records of fully vaccinated individuals reported to the Nebraska State Immunization Information System (NESIIS).

HOSPITALIZATIONS

94%

of COVID-19 hospitalizations since Jan. 1, 2021 were among people not fully vaccinated

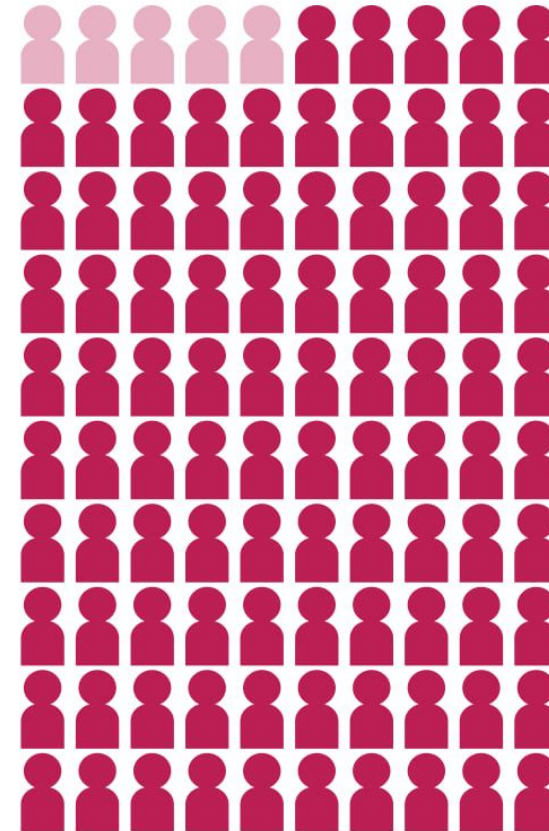


Hospitalizations: COVID-19 hospitalizations were identified from healthcare encounter data obtained from the State Health Information Exchange (CyncHealth), which were matched with NESIIS vaccination data. We estimate this data source contains 60-70% of all COVID-19 hospitalizations in Nebraska.

DEATHS

95%

of COVID-19 deaths since Jan. 1, 2021 were among people not fully vaccinated



Deaths: COVID-19 deaths were identified from death certificates when COVID-19, SARS-CoV-2, or another synonym was listed as the immediate or contributing cause of death.

Fully vaccinated: Fully vaccinated is defined as ≥ 14 days after the second dose of a two-dose vaccine or first dose of a single-dose vaccine. Not fully vaccinated includes individuals either partially vaccinated (i.e., not fully vaccinated as per the definition) or not having ever received a COVID-19 vaccine.



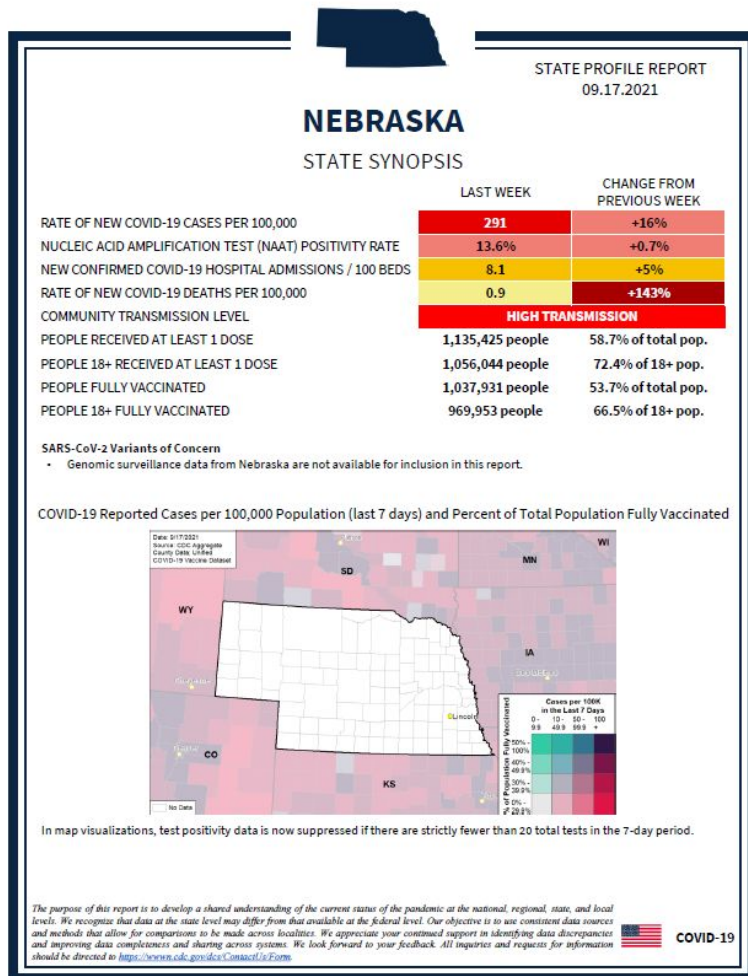
Public Health Updates

Dr. Alice Sato, MD, PhD

- Assistant Professor, Division of Pediatric Infectious Diseases
- Associate Hospital Epidemiologist for Children's Hospital and Medical Center
- Member, Pediatric Infectious Disease Society



Nebraska Data



CDC State Profile Report

What are the key takeaways from the data?



Pediatric Cases (Nationwide)

Cumulative Number of Child COVID-19 Cases

- 5,292,837 total child COVID-19 cases reported, representing 16% of all cases in the U.S.
- Overall rate: 7,032 cases per 100,000 children in the population

Change in Child COVID-19 Cases: 243,373 child COVID-19 cases were reported from 9/2/21-9/9/21 and children represented 29% of the weekly reported cases

Hospitalizations: Among states reporting, children ranged from 1.6%-4.0% of their total cumulated hospitalizations, and 0.1%-1.9% of all their child COVID-19 cases resulted in hospitalization

Mortality: Among states reporting, children were 0.00%-0.27% of all COVID-19 deaths; in states reporting, 0.00%-0.03 of all child COVID-19 cases resulted in death

<https://www.aap.org/en/pages/2019-novel-coronavirus-covid-19-infections/children-and-covid-19-state-level-data-report/>



Delta Variant and Pediatric COVID-19 Cases

- There's a lot of misinformation and disinformation about COVID-19, masks, vaccines, and the effect of this virus on kids. What do we know, and who should be our best source of information?
- What are some of the myths about COVID-19 you'd like to dispel right now?
- As we anticipate the emergency use authorization of the vaccine for children ages 5 to 12, how can districts play a role in messaging the safety and efficacy of the vaccine?
- What advice do you have for districts right now?



Submitted Questions

- Why hasn't the NDE put out specific guidance for schools? Are we supposed to follow CDC's guidance?
- Where does authority ultimately lie in health-related decision making like quarantine, protocols, etc.?

Next Call

Tuesday, October 12 at 11 a.m. CST

Submit Topics/Questions: <https://forms.gle/op7ZRq3h3CmFz3hs7>

