



Matthew L. Blomstedt, Ph.D., Commissioner

# NEBRASKA

## DEPARTMENT OF EDUCATION

[www.education.ne.gov](http://www.education.ne.gov)

301 Centennial Mall South

P.O. Box 94987

Lincoln, NE 68509-4987

TEL 402.471.2295

FAX 402.471.0117

### Consumer Information Internet Service for Education

The Nebraska Department of Education (NDE) initiated a Request for Information (RFI) and invited all qualified Nebraska service providers in the state to submit availability and pricing of Internet service for residential customers who are un/under-served K-20 students and teachers. Twenty-six providers responded with pricing and service around the state with access to the Internet available through the following types of service.

**Month-to-month, Annual, or Multi-year contracts:** These options will be immediately available to customers.

- **Mobile Cellular / Mobile Wireless (mifi, etc)**
- **Fixed Wireless Access**
- **Wired Internet to the home**
- **Satellite Service**

Service Providers who submitted service options are listed within this document. Each vendor also included service area / coverage maps of the area(s) it serves.

## PURPOSE

### EQUITY and the HOMEWORK GAP

As COVID-19 continues to challenge our nation, the reality is clear: Schools and districts face a multi-pronged challenge in providing the instruction and the supports necessary to ensure that students can learn and grow despite the immense pressures surrounding them and their families.

As schools and districts move toward 1:1 and blended learning instructional models, access to digital content is essential for student success – but not all students have access to reliable Internet at home. The result is a growing problem known as the homework gap, where students without access to reliable Internet after school are unable to complete online assignments.

It's a problem that many educators have been grappling with for years, but one that has been exacerbated—and made more public—by COVID-19: Many students lack sufficient Internet connections at home to be able to complete their schoolwork. In a matter of days,

the “homework gap” widened to a full-fledged learning gap, as computers and Internet connections soared to the top of the list of required school supplies and districts made hasty plans to roll out virtual learning.

As part of its Future Ready Nebraska initiative, the Nebraska Department of Education developed the *Hierarchy of Digital Learning Needs* to provide a framework and touchstone for delivering and sustaining the systems needed for equitable, digital learning.

## STRATEGIES for DIGITAL LEARNING NEEDS

The *Hierarchy of Digital Learning Needs* model is based on systems theory thinking, in that for any of the elements to work effectively, each must be solidly implemented with fidelity starting with the bottom layer. In addition, assuring equity to every student, no matter the location or situation, is a high priority of this model.



The **Request for Information** focuses on the first layer:

**INFRASTRUCTURE** - Equity of Internet access to every home.

As the base of the model, infrastructure is vital to the success of the other strategies. There are many elements to consider, including but not limited to: Urban/ rural availability, cost and data limits, and travel from home to location(s) where wireless access is available.

Actions:

- Identify areas where access to Internet is weak or non-existent
- Identify methods for bringing Internet to these locations
- Implement appropriate solutions for each area

### Terms and Conditions:

Each Service Provider was asked to agree to the following service terms and conditions and may include additional terms and conditions of its own. In case of conflict, those listed herein will take precedence.

- When available, minimum service level of 5 Mbps download / 5 Mbps upload speeds per end user. In cases where multiple users share this bandwidth, additional bandwidth speeds can be included in the pricing catalog.
- Indicate the monthly recurring cost (MRC) including any taxes and fees applicable to reflect the actual monthly fee.
- Include one-time non-recurring cost (NRC) if applicable.
- Indicate if this option is month-to-month, annual, or multi-year contracts. Provider may list several service options.
- Indicate bulk pricing when applicable and the cost savings included with that option.
- Prices listed as “annual” or “multi-year” will be honored for calendar year(s) beginning with the first date of new service. Customer has the right to renew or discontinue at the end of the initial contract term, but understands that new pricing may be applied. Customer will receive notice of new pricing no less than 4-weeks prior to the end of the initial contract term.
- Month-to-month service may be discontinued at any time with 30-days notice.
- No data caps *or* monthly limits on the amount of *data will be applied during the term of the contract*, and the service must be available 24 hours a day/7 days a week.

## CONCLUSION

NDE greatly appreciates each vendor who participated in this effort, and hopes that students and educators around the state will find this catalog useful in identifying available and affordable Internet service to the home.

NDE will continue to update this catalog for a period of time in the hopes that additional services will be available as providers build out their networks.

**Internet for Education  
Catalog of Service for Students and Teachers**

**TABLE OF CONTENTS – ORDER OF DOCUMENTS**

<b>CUSTOMER INFORMATION – Purpose and Service Description</b>		
<b>SERVICE PROVIDER</b>	<b>TYPE(S) OF SERVICE</b>	<b>GENERAL AREAS OF SERVICE</b> <i>(see coverage maps on Provider page)</i>
<b>ALLO Communications, LLC</b>	Wired	Regional statewide
<b>Applied Connective Technologies</b>	Fixed Wireless	Greeley / Newman Grove
<b>AT&amp;T</b>	Cellular	Statewide
<b>Benkelman Telephone Co., Inc.</b>	Wired	Benkelman
<b>Big Red Communications L.L.C.</b>	Fixed Wireless	Regional statewide
<b>Center Cable Co.</b>	Wired	Greeley
<b>Cozad Telephone Company</b>	Wired	Cozad
<b>Dalton Telecommunications, Inc.</b>	Fixed Wireless / Wired	Western Nebraska
<b>Great Plains Communications, LLC.</b>	Wired	Statewide
<b>Hamilton Telecommunications</b>	Fixed Wireless / Wired	Central region, Sidney area
<b>Hartman Telephone Exchanges, Inc.</b>	Wired	Southern border
<b>Mobius Communications Company</b>	Wired / Satellite	Panhandle
<b>Nebnet/Consolidated Companies, Inc.</b>	Wired	Central
<b>Nebraska Central Telephone Company</b>	Wired	Central
<b>Nextlink Internet</b>	Fixed Wireless	Regional statewide
<b>Pinpoint Communications</b>	Wired	Central and Western regions
<b>Pointenet</b>	Fixed Wireless	Eastern regions
<b>Spectrum Communications</b>	Wired	Regional statewide
<b>Stealth Broadband</b>	Fixed Wireless / Wired	Regional statewide
<b>T-Mobile USA</b>	Cellular	Statewide
<b>US Cellular Services, LLC</b>	Cellular	Statewide
<b>Verizon Wireless</b>	Cellular	Statewide
<b>Vistabeam</b>	Fixed Wireless	Panhandle/SW regions
<b>Wauneta Telephone Company</b>	Wired	Wauneta
<b>Windbreak Cable</b>	Wired	Panhandle
<b>Wirelessnet LLC</b>	Fixed Wireless	Central regions
<b>Service Provider Directory</b>		

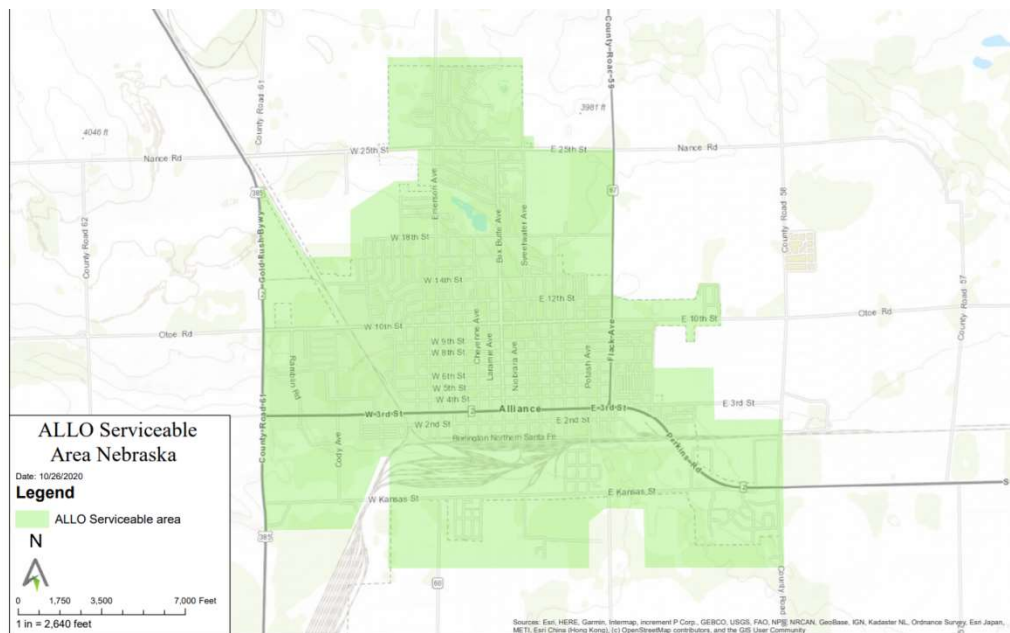
**Types of Service:**

- Cellular – Uses mobile cellular service to devices or MiFi type connections.
- Fixed Wireless – Line of sight signal is established from provider's tower to customer premise
- Wired – Cable (such as DSL or Fiber) is hard wired to the customer premise
- Satellite – Transmission via dish at the customer premise to a low orbiting earth satellite

<b>Service Provider:</b>	<b>ALLO Communications, LLC</b>
<b>Contact:</b>	ALLO Inside Sales (402) 480-6550 <a href="mailto:Allo-insidesales@allophone.net">Allo-insidesales@allophone.net</a>
<b>Service Type:</b>	<b>WIRED Internet Service</b>
<b>Upload/Download Bandwidth Speeds</b>	50 Mbps/ 50 Mbps
<b>Service Term Options:</b>	Month-to-Month
<b>One-time Non-recurring cost (NRC)</b>	\$0.00
<b>Monthly recurring cost (MRC)</b>	\$45.00
<b>MRC taxes/fees</b>	\$0
<b>Total Monthly cost</b>	\$45.00
<b>Service Description:</b>	<p>ALLO Communications provides high speed internet through a 100% fiber network. ALLO's pure fiber-optic service connects directly to homes. Fiber-optic cables, rather than copper, provide faster and more reliable service, even during peak usage times.</p> <p>ALLO does not enforce data caps. Unfettered access is a key component of ALLO's Fiber to the Home networks. The ability to provide broadband and internet without data caps or other limits is essential to quality service.</p> <p>ALLO provides symmetrical upload and download speeds of 50 Mbps for \$45/month, which includes a GigaCenter Wi-Fi router and free installation. This rate could be reduced for some residents who qualify for subsidies through federal government programs.</p> <p>ALLO also offers internet bandwidth options of 500 Mbps and 1G for an additional cost. Residents can choose the speed that best fits their needs.</p>

## Coverage Maps:

### Alliance NE



[illegible]

**ALLO Serviceable  
Area Nebraska**

Date: 10/26/2020

**Legend**

- ALLO Serviceable area

N

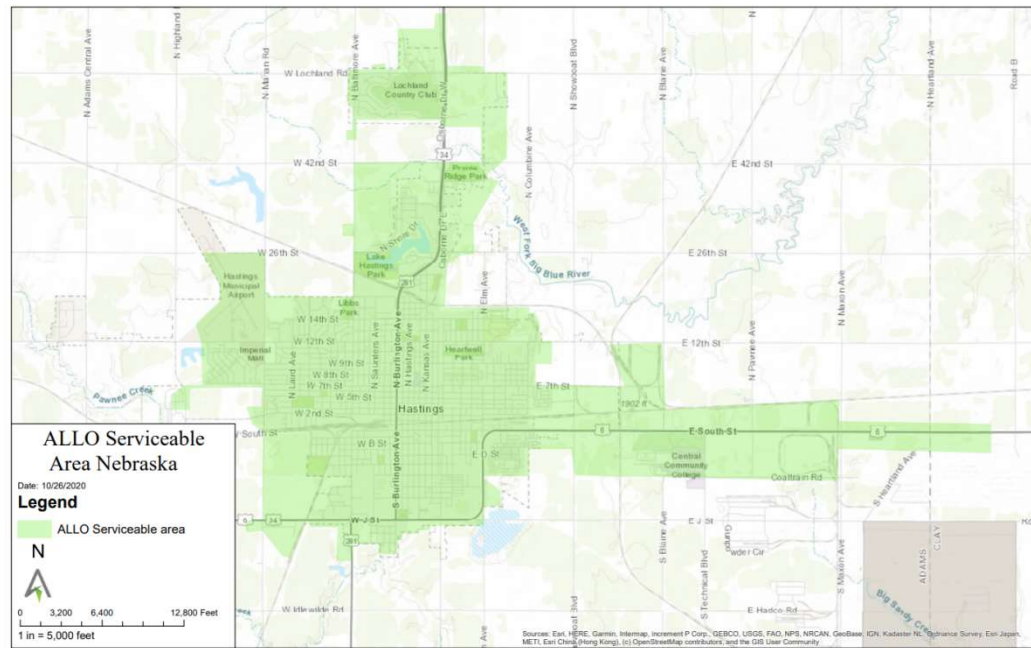
0 1,250 2,500 5,000 Feet

1 in = 2,000 feet

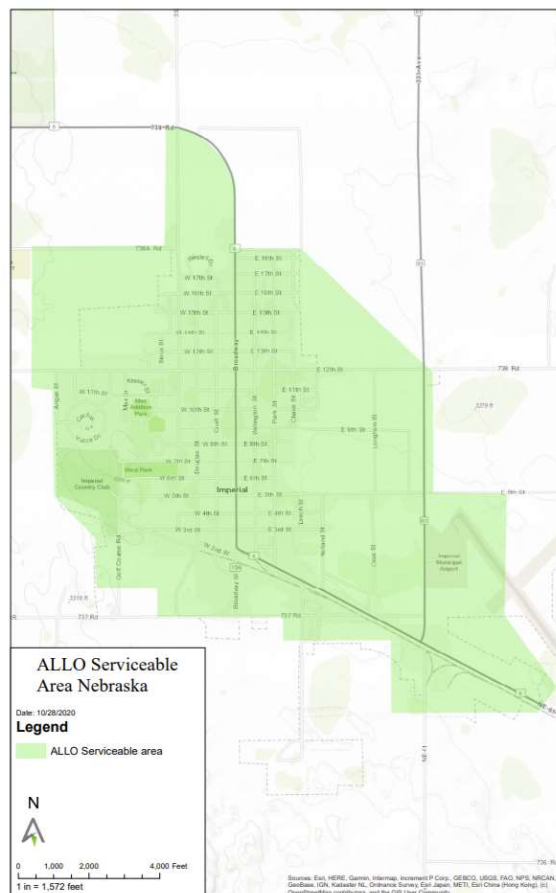
Sources: Esri, HERE, Garmin, Intermap, increment P Corp., GEBCO, USGS, NOAA, NRCAN, Geobase, IGN, Kadaster NL, Ordnance Survey, Esri Japan, METI, Swisstopo, Mapbox, © OpenStreetMap contributors, and the GIS User Community.

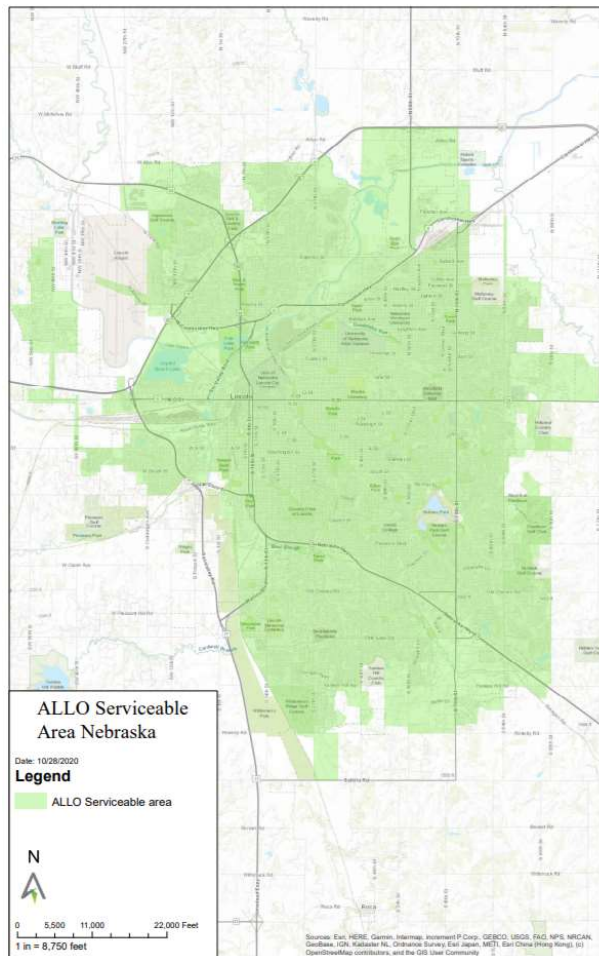


## Hastings NE



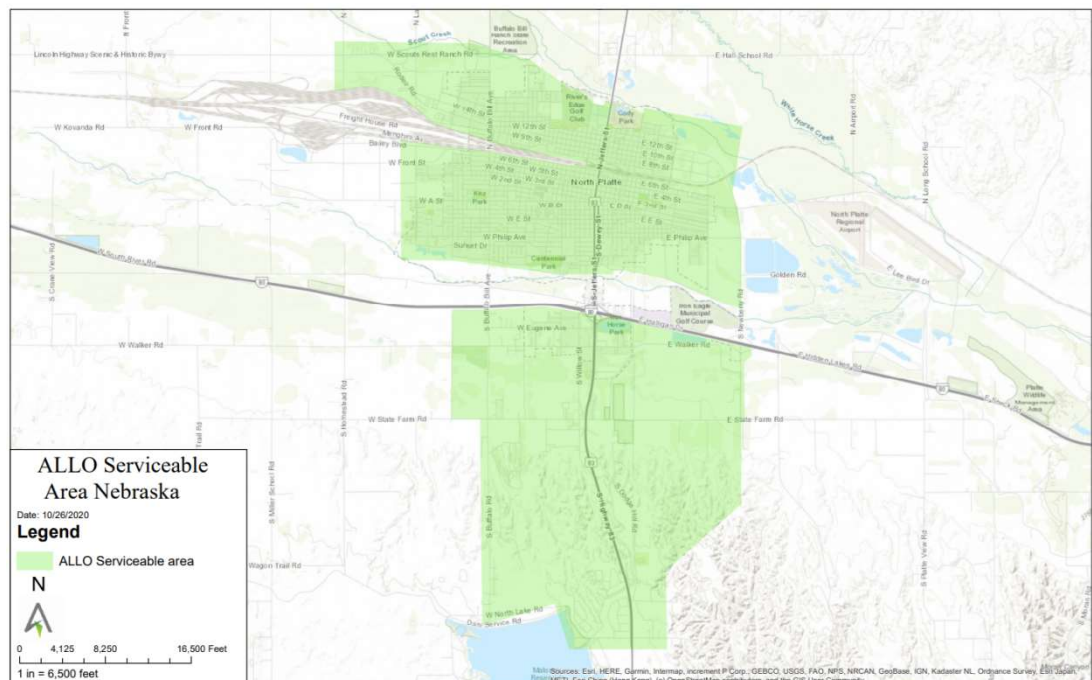
## Imperial NE





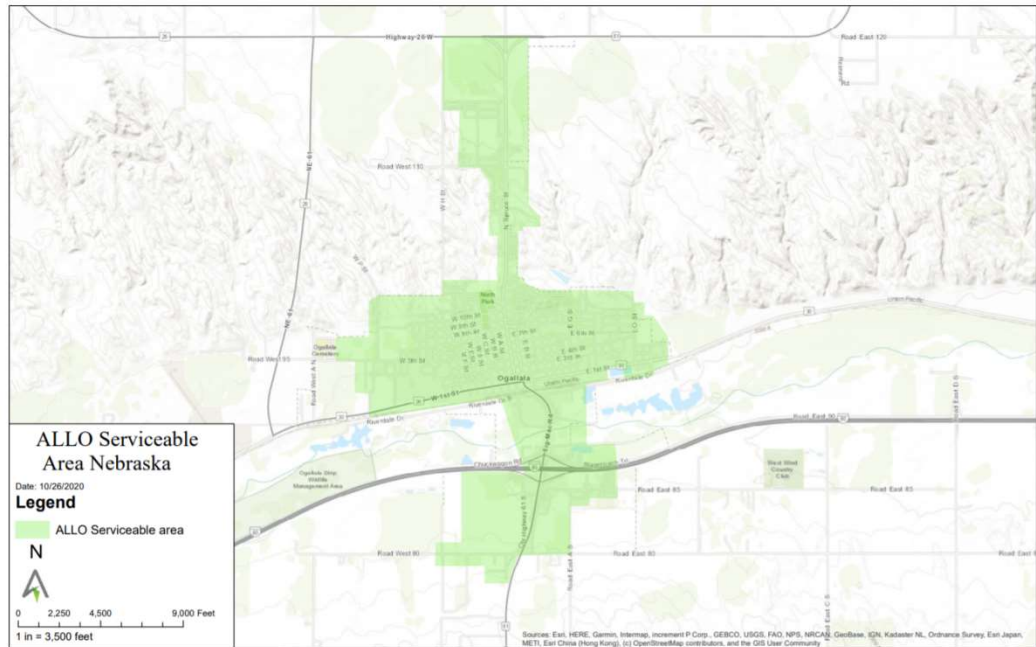
Lincoln NE

North Platte NE

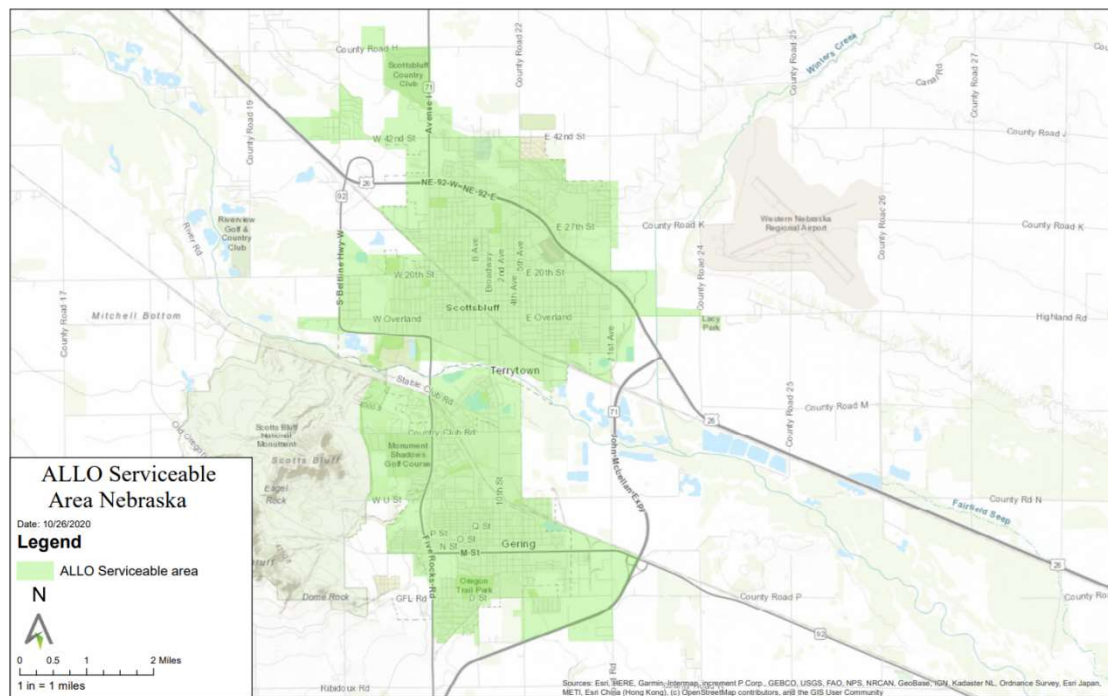




## Ogallala NE

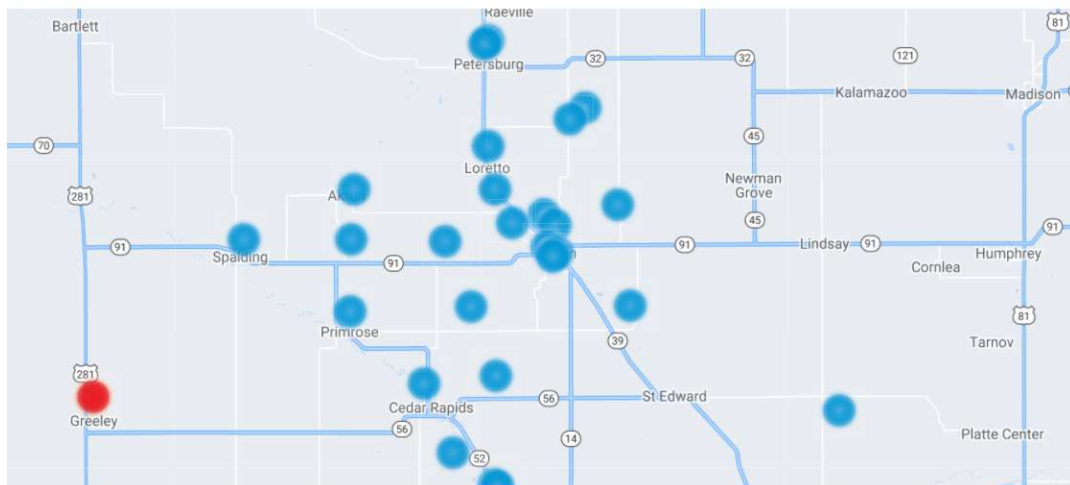


## Scottsbluff / Gering NE



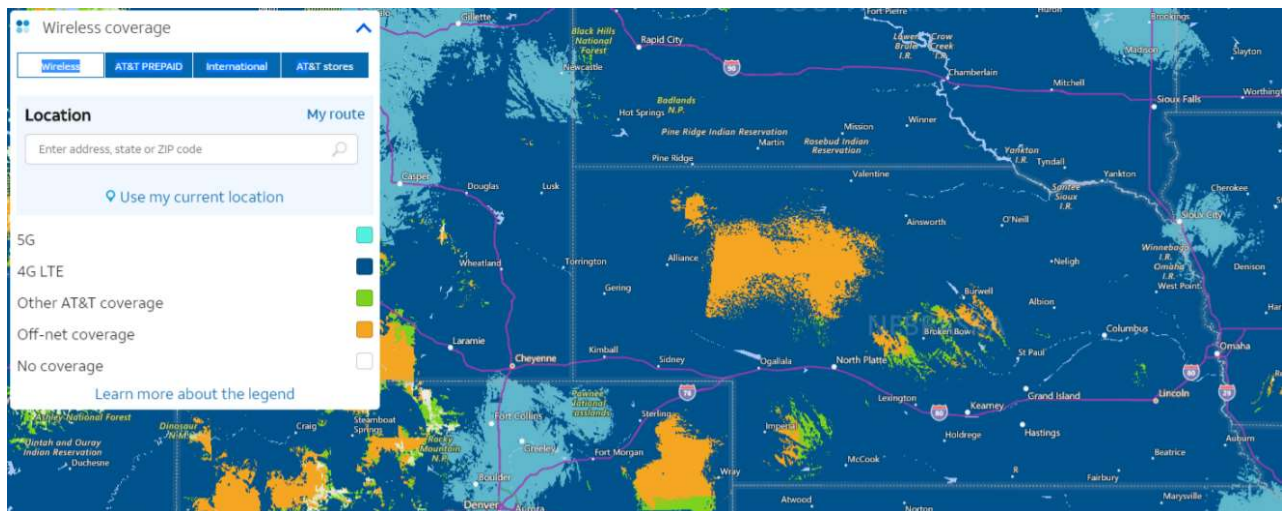
<b>Service Provider:</b>	<b>Applied Connective Technologies</b>
<b>Contact:</b>	Ed Knott (402) 395-6924 <a href="mailto:eknott@appliedconnective.com">eknott@appliedconnective.com</a>
<b>Service Type:</b>	<b>FIXED WIRELESS Internet Service</b>
<b>Upload/Download Bandwidth Speeds</b>	5 Mbps / 15 Mbps
<b>Service Term Options:</b>	Month-to-Month
<b>One-time Non-recurring cost (NRC)</b>	\$140.0
<b>Monthly recurring cost (MRC)</b>	\$55.00
<b>MRC taxes/fees</b>	\$0.0
<b>Total Monthly cost</b>	\$55.00
<b>Service Description:</b>	Fixed wireless Internet services. Unlimited data. Wireless router included.

#### Coverage Map:



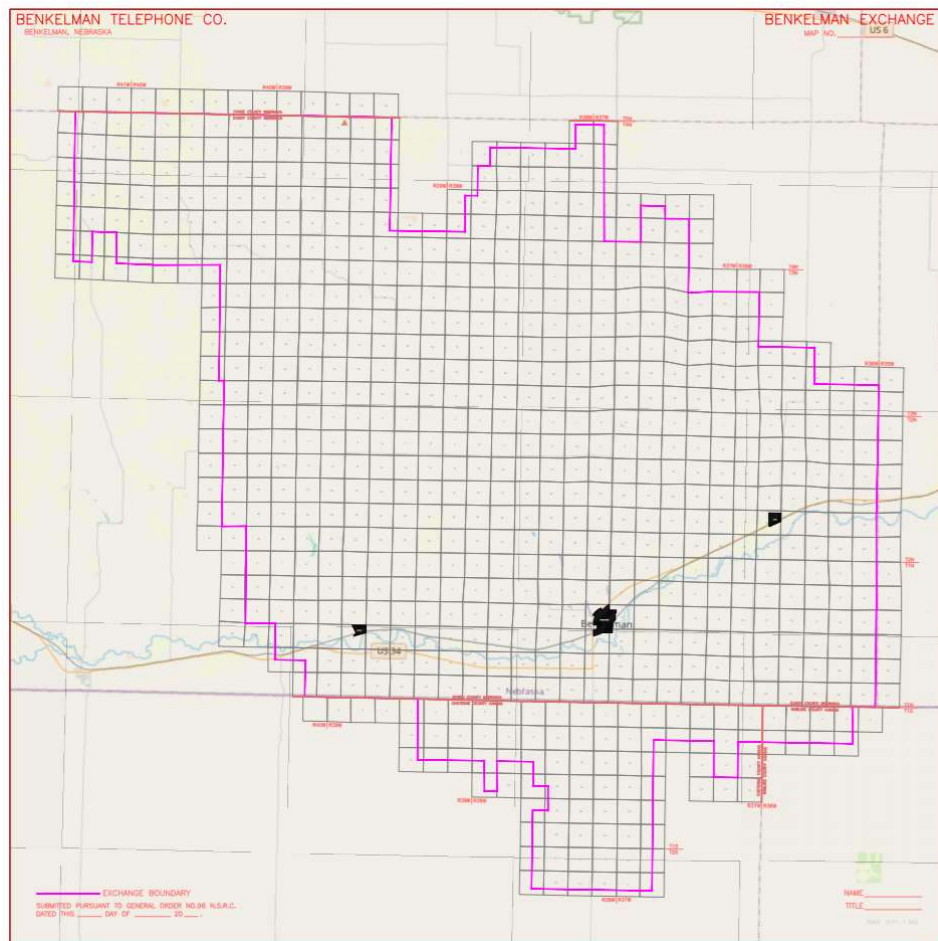
<b>Service Provider:</b>	<b>A T &amp; T</b>
<b>Contact:</b>	Kevin Ford (636) 591-4696 <a href="mailto:kf572w@att.com">kf572w@att.com</a>
<b>Service Type:</b>	<b>MOBILE CELLULAR Internet Service <sup>1</sup></b>
<b>Upload/Download Bandwidth Speeds</b>	3-10 Mbps / 5-20 Mbps
<b>Service Term Options:</b>	Month-to-Month Annual Multi-Year
<b>One-time Non-recurring cost (NRC)</b>	\$0.00
<b>Monthly recurring cost (MRC)</b>	\$15.00
<b>MRC taxes/fees</b>	\$3.42
<b>Total Monthly cost</b>	\$18.42
<b>Service Description:</b>	<p>4G LTE data only hotspot device that complies with CIPA. Enterprise Traffic Protector would act as the MDM. This software would come pre-installed and would act as a content filtering system that would allow end users to safely access the data they needed.</p> <p>Equipment charges will be credited back with 24 month equipment installment agreement. Schools do have the option to suspend a device for 3 months at \$0.01 per month.</p> <p>*Where 4G LTE is available with eligible devices.</p>
<b>Service Type:</b>	<b>MOBILE CELLULAR Internet Service <sup>2</sup></b>
<b>Upload/Download Bandwidth Speeds</b>	3-10 Mbps / 5-20 Mbps
<b>Service Term Options:</b>	Month-to-Month Annual Multi-Year
<b>One-time Non-recurring cost (NRC)</b>	\$0.00
<b>Monthly recurring cost (MRC)</b>	\$20.00
<b>MRC taxes/fees</b>	\$3.42
<b>Total Monthly cost</b>	\$23.42
<b>Service Description:</b>	<p>4G LTE data only hotspot device that complies with CIPA. Access My Lan would act as the MDM. This software would come pre-installed and would act as a content filtering system that would allow end users to safely access the data they needed. AML also comes with an admin portal to pick and choose which sites are safe and unsafe along with a vast portfolio of other features.</p> <p>Equipment charges will be credited back with 24 month equipment installment agreement. Schools do have the option to suspend a device for 3 months at \$0.01 per month.</p> <p>*Where 4G LTE is available with eligible devices.</p>

Coverage Map:



<b>Service Provider:</b>	<b>Benkelman Telephone Co., Inc.</b>
<b>Contact:</b>	Linda McKain (308) 423-2000 lmckain@bwtelcom.net
<b>Service Type:</b>	<b>WIRED Internet Service</b>
<b>Upload/Download Bandwidth Speeds</b>	25 Mbps / 25 Mbps
<b>Service Term Options:</b>	Month-to-Month
<b>One-time Non-recurring cost (NRC)</b>	\$0.00
<b>Monthly recurring cost (MRC)</b>	\$49.95
<b>MRC taxes/fees</b>	\$0.00
<b>Total Monthly cost</b>	\$49.95
<b>Service Description:</b>	25/25 package is offered where we have fiber

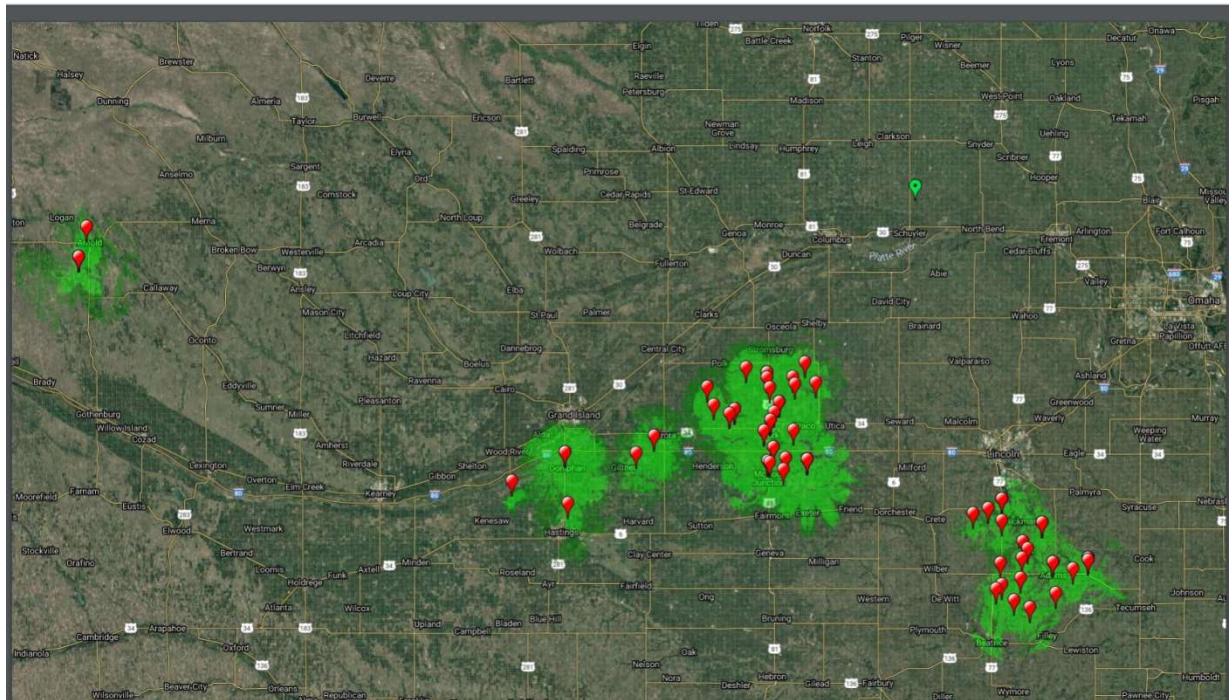
#### Coverage Map:





Service Provider:	Big Red Communications	
Contact:	Andrew Powell (402) 380-7620 Ext 499 <a href="mailto:andy@bigredne.com">andy@bigredne.com</a>	
Service Type:	FIXED WIRELESS Internet Service	
Upload/Download Bandwidth Speeds	10 Mbps / 50 Mbps	10 Mbps / 32 Mbps
Service Term Options:	Month-to-Month Annual	
One-time Non-recurring cost (NRC)	\$99.99	\$99.99
Monthly recurring cost (MRC)	\$99.99	\$79.00
MRC taxes/fees	\$0.55	\$0.55
Total Monthly cost	\$100.54	\$80.54
Service Description:	We are a fixed wireless provider that is offering line of sight service and partial line of sight services.	

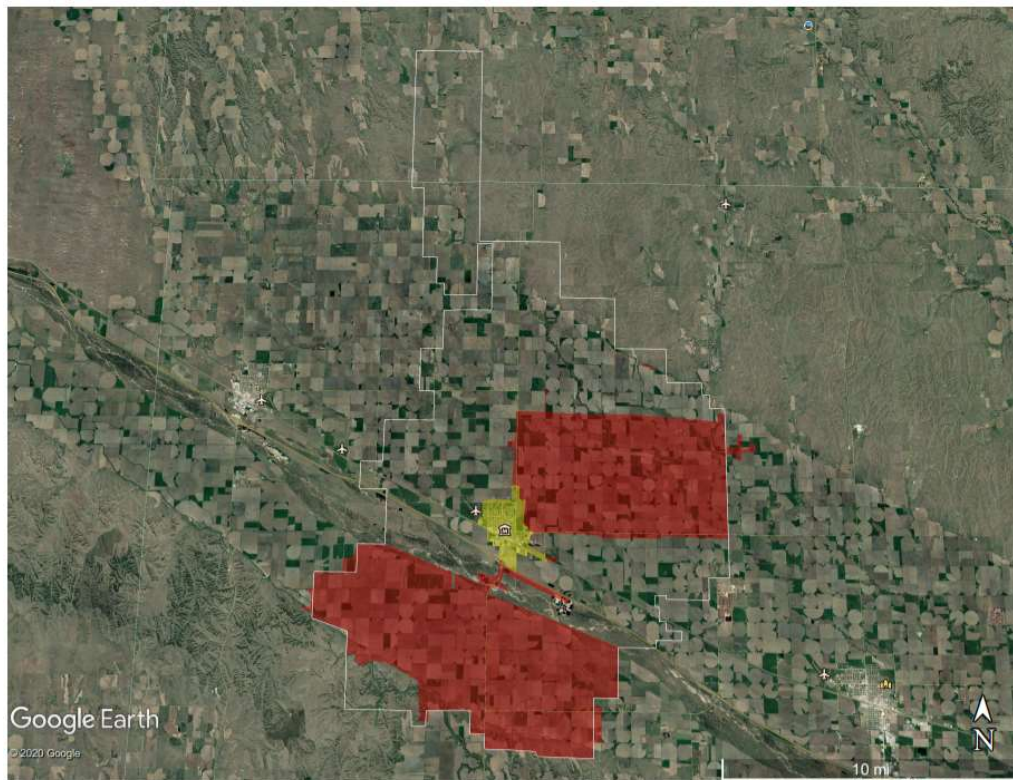
#### Coverage Map:





Service Provider:	Cozad Telephone Company				
Contact:	Dreu Young (302) 785-4044 <a href="mailto:dyoung.ctc@cozadtel.net">dyoung.ctc@cozadtel.net</a>				
Service Type:	WIRED Internet Service				
Upload/Download Bandwidth Speeds	5 / 30 Mbps	25 / 60 Mbps	50 / 80 Mbps	50 / 100 Mbps	100 / 100 Mbps
Service Term Options:	Month-to-Month				
One-time Non-recurring cost (NRC)	\$50.00 for all levels				
Monthly recurring cost (MRC)	\$50.00	\$70.00	\$90.00	\$145.00	\$165.00
MRC taxes/fees	\$0.00 for all levels				
Total Monthly cost	\$50.00	\$70.00	\$90.00	\$145.00	\$165.00
Service Description:	Coverage map shows the entire exchange (white border), the areas in the exchange where fiber is currently available (yellow), and the areas where fiber construction is currently underway (red) with a completion date of Spring 2021. Any area not colored in our exchange does have the copper internet service available to them until we complete our entire rural fiber-to-the-home build-out.				

Coverage Map:



<b>Service Provider:</b>	<b>Dalton Telecommunications, Inc.</b>
<b>Contact:</b>	Matt Moore (308) 377-2556 <a href="mailto:mmoore@usch.com">mmoore@usch.com</a>
<b>Service Type:</b>	<b>FIXED WIRELESS Internet Service</b>
<b>Upload/Download Bandwidth Speeds</b>	10 Mbps / 55 Mbps
<b>Service Term Options:</b>	Month-to-Month Annual Multi-year contract
<b>One-time Non-recurring cost (NRC)</b>	\$75.00
<b>Monthly recurring cost (MRC)</b>	\$49.95
<b>MRC taxes/fees</b>	\$0
<b>Total Monthly cost</b>	\$49.95
<b>Service Description:</b>	Fixed Wireless offering is in Potter and Gurley. We can provide 55/10mbps with line of sight.
<b>Service Type:</b>	<b>WIRED Internet Service</b>
<b>Upload/Download Bandwidth Speeds</b>	100 Mbps / 100 Mbps
<b>Service Term Options:</b>	Month-to-Month Annual Multi-year contract
<b>One-time Non-recurring cost (NRC)</b>	\$75.00
<b>Monthly recurring cost (MRC)</b>	\$49.95
<b>MRC taxes/fees</b>	\$0
<b>Total Monthly cost</b>	\$49.95
<b>Service Description:</b>	•Fiber (FTTH) services in portions of Cheyenne, Morrill, Garden, Deuel, Kimball, and Perkins Counties. •DSL services in portions of Cheyenne, Morrill, Garden, Deuel, Banner, Kimball, Perkins, Chase, and Lincoln Counties.

Coverage Map (see list of counties covered below):

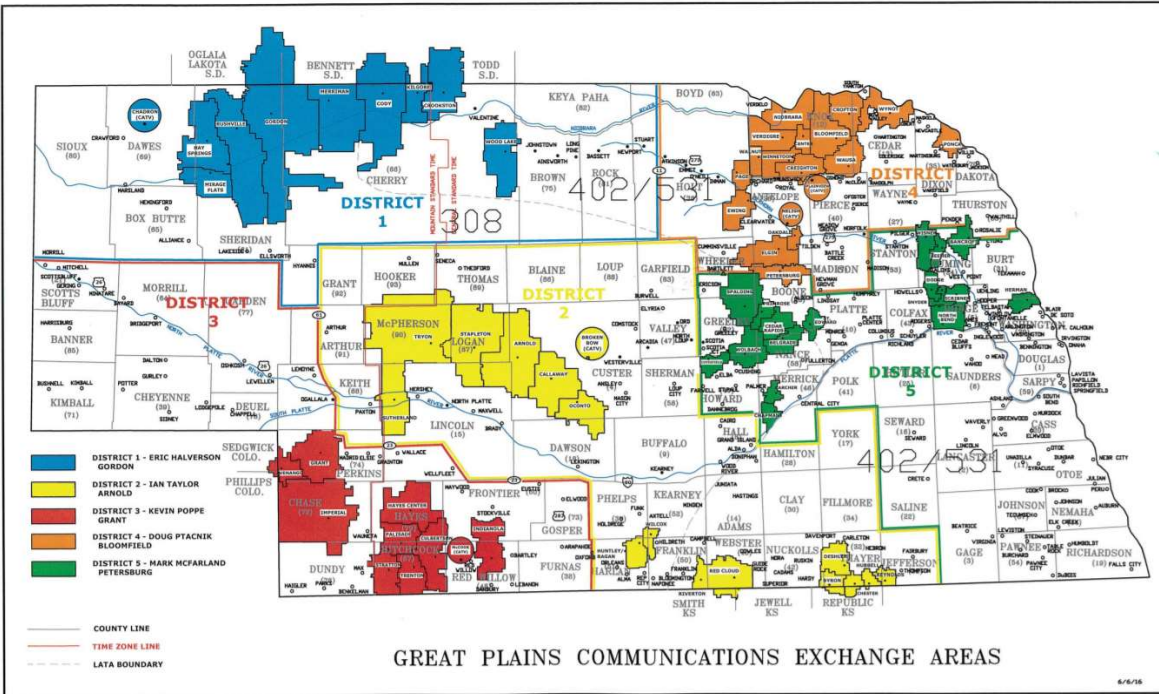
- Fixed Wireless offering is in Potter and Gurley.
- Fiber (FTTH) services in portions of Cheyenne, Morrill, Garden, Deuel, Kimball, and Perkins Counties.
- DSL services in portions of Cheyenne, Morrill, Garden, Deuel, Banner, Kimball, Perkins, Chase, and Lincoln Counties.

SERVICE PROVIDER:	Great Plains Communications, LLC.	
Contact:	Jeff Mason (402) 456-6467 <a href="mailto:jmason@gpcom.com">jmason@gpcom.com</a>	
Service Type:	WIRED Internet Service	
Upload/Download Bandwidth Speeds	30 Mbps / 3 Mbps <sup>1</sup>	50 Mbps / 5 Mbps <sup>2</sup>
Service Term Options:	Month-to-Month	
One-time Non-recurring cost (NRC)	\$0	
Monthly recurring cost (MRC)	\$57.95	
MRC taxes/fees	\$0	
Total Monthly cost	\$57.95	
Service Description:	<p><sup>1</sup> \$57.95 MRC - 30M X UP TO 3M residential standard internet service for GPC Exchange areas: Archer, Arnold, Bancroft, Beemer, Belgrade, Bloomfield, Broken Bow, Byron, Callaway, Cedar Rapids, Center, Chadron, Champion, Chapman, Chester, Cody, Cotesfield, Creighton, Crofton, Crookston, Culbertson, Deshler, Dodge, Elgin, Enders, Ewing, Fordyce, Gordon, Hamlet, Hayes Center, Hay Springs, Herman, Hubbell, Huntley, Indianola, Kilgore, Magnet, Merriman, Mirage Flats, Neligh, Niobrara, North Bend, Oakdale, Oconto, Page, Palisade, Petersburg, Plainview, Ponca, Primrose, Ragan, Red Cloud, Rushville, Reynolds, St. Edward, St. Helena, Scribner, Snyder, Spalding, Stapleton, Stratton, Sutherland, Trenton, Tryon, Venango, Verdigre, Walmut, Wausa, Wilcox, Winnetoon, Wisner, Wolbach, Woodlake, Wynot</p> <p><sup>2</sup> \$46.95 MRC for 50M X UP TO 5M residential standard internet service to these GPC Exchange areas: Grant, Imperial and McCook</p> <p>Standard Installation Charge - WAIVED (Value \$65.00)** *Above quoted bandwidth speeds are for residential services only, and are the highest available for this level of service. Service levels may not be available in all areas. **Standard installation charge apply to basic installation at the residence. Additional charges for network construction or equipment are not included and billed separately. For employee safety, GPC requests that COVID 19/CDC Guidelines are followed during in-person service installations.</p>	

Coverage Map (next page):

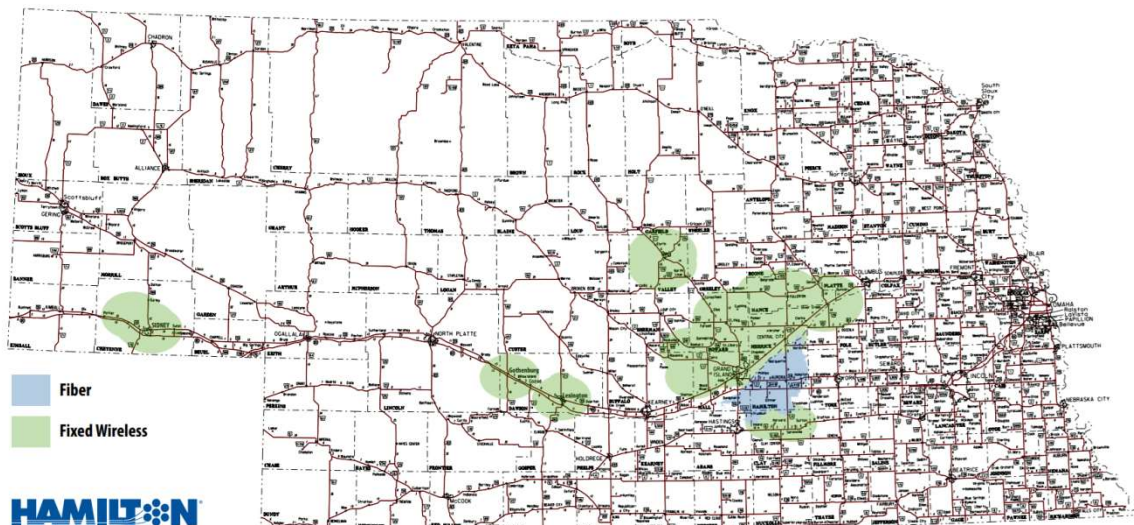
See list of counties served in the Service Description above.





Service Provider:	Hamilton Telecommunications	
Contact:	Kiley James (402) 694-5101 <a href="mailto:kiley.james@hamiltontel.com">kiley.james@hamiltontel.com</a>	
Service Type:	FIXED WIRELESS Internet Service	
Upload/Download Bandwidth Speeds	5 Mbps / 10 Mbps	5 Mbps / 15 Mbps
Service Term Options:	Month-to-Month	
One-time Non-recurring cost (NRC)	\$0.00	\$0.00
Monthly recurring cost (MRC)	\$64.95	\$89.00
MRC taxes/fees	\$0.00	\$0.00
Total Monthly cost	\$64.95	\$89.00
Service Description:	6 month initial contract term, with month-to-month service after the initial term	
Service Type:	WIRED Internet Service	
Upload/Download Bandwidth Speeds	50 Mbps / 300 Mbps	
Service Term Options:	Month-to-Month	
One-time Non-recurring cost (NRC)	\$0.00	
Monthly recurring cost (MRC)	\$89.90	
MRC taxes/fees	\$0.00	
Total Monthly cost	\$89.90	
Service Description:	6 month initial contract term, with month-to-month service after the initial term	

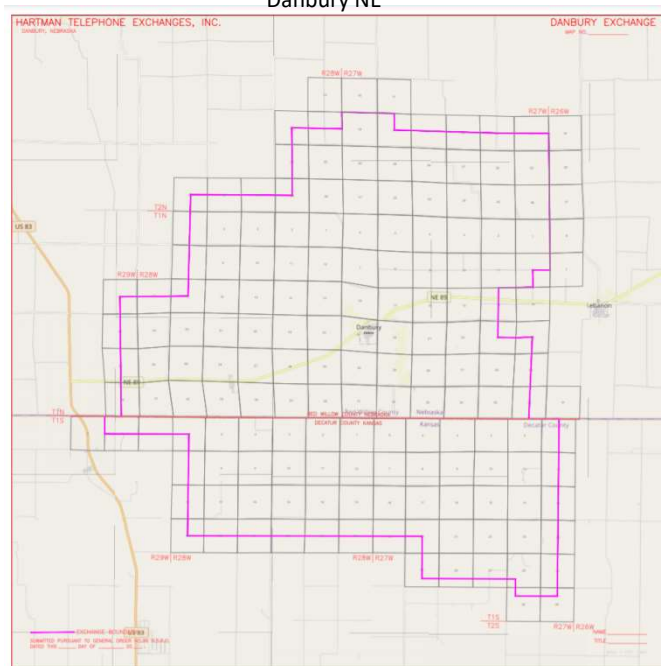
Coverage Map:



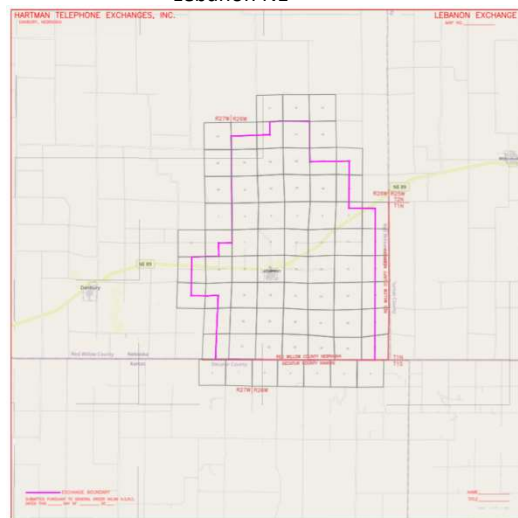
<b>Service Provider:</b>	<b>Hartman Telephone</b>
<b>Contact:</b>	Linda McKain (308) 423-2000 <a href="mailto:lmckain@bwtelcom.net">lmckain@bwtelcom.net</a>
<b>Service Type:</b>	<b>WIRED Internet Service</b>
<b>Upload/Download Bandwidth Speeds</b>	25 Mbps / 25 Mbps
<b>Service Term Options:</b>	Month-to-Month
<b>One-time Non-recurring cost (NRC)</b>	\$0.0
<b>Monthly recurring cost (MRC)</b>	\$49.95
<b>MRC taxes/fees</b>	\$0.0
<b>Total Monthly cost</b>	\$49.95
<b>Service Description:</b>	25/25 package is offered where we have fiber

### Coverage Maps:

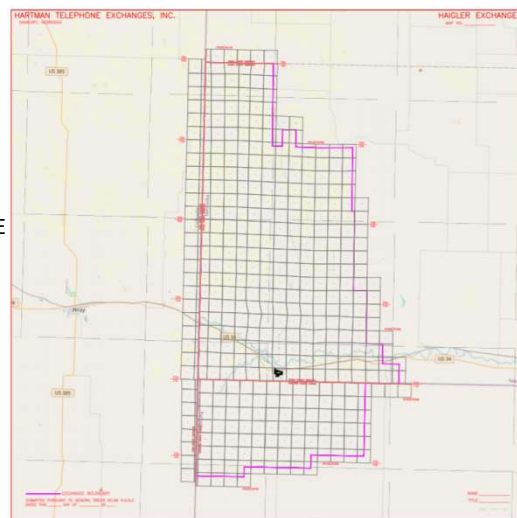
Danbury NE



Lebanon NE



Haigler NE

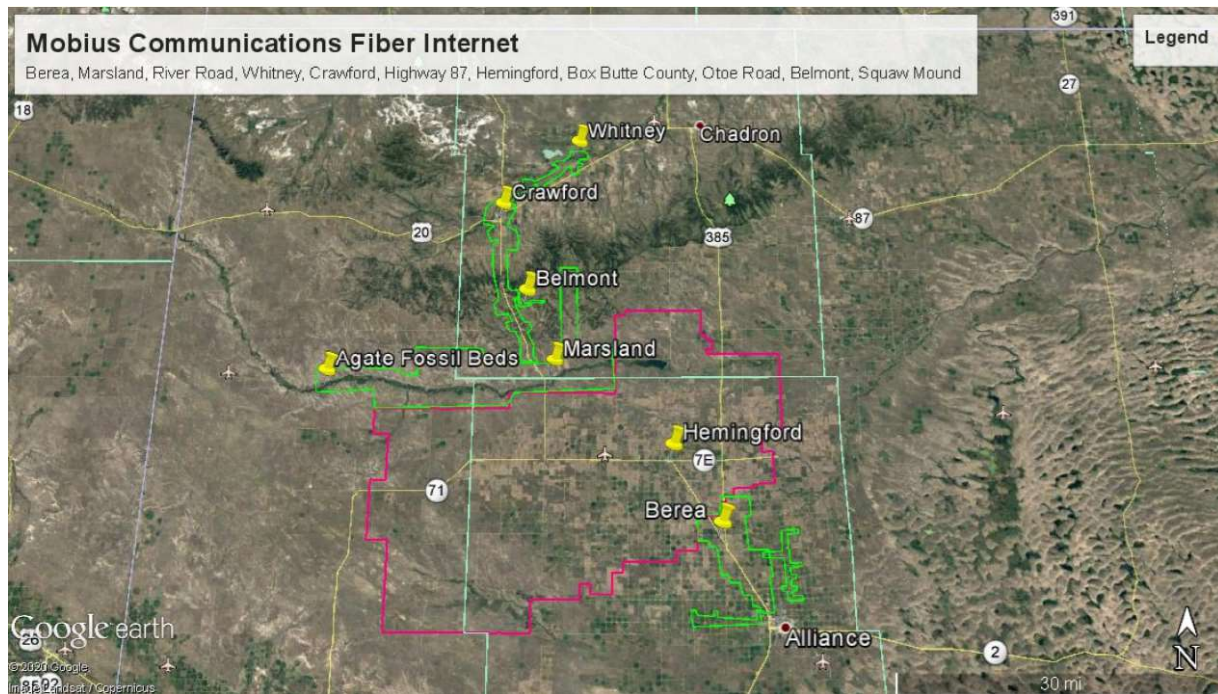


<b>Service Provider:</b>	<b>Mobius Communications</b>
<b>Contact:</b>	Tonya Mayer (308) 487-5500 <a href="mailto:tonya@bbc.net">tonya@bbc.net</a>
<b>Service Type:</b>	<b>WIRED Internet Service</b>
<b>Upload/Download Bandwidth Speeds</b>	25 Mbps / 25 Mbps
<b>Service Term Options:</b>	Subject to contract
<b>One-time Non-recurring cost (NRC)</b>	\$0.00
<b>Monthly recurring cost (MRC)</b>	\$40
<b>MRC taxes/fees</b>	\$0
<b>Total Monthly cost</b>	\$40
<b>Service Description:</b>	High Speed Fiber to the Home Broadband. Speeds beginning at 25/25. Also available 50 Meg, 100 Meg, 200 Meg, 300 Meg
<b>Service Type:</b>	<b>SATELLITE Internet Service</b>
<b>Upload/Download Bandwidth Speeds</b>	12 Mbps / 3 Mbps
<b>Service Term Options:</b>	Month-to-Month Multi-year contract
<b>One-time Non-recurring cost (NRC)</b>	\$179.95
<b>Monthly recurring cost (MRC)</b>	\$75.94
<b>MRC taxes/fees</b>	\$0.33
<b>Total Monthly cost</b>	\$76.27
<b>Service Description:</b>	Mobius Communications Resold Viasat Satellite Internet

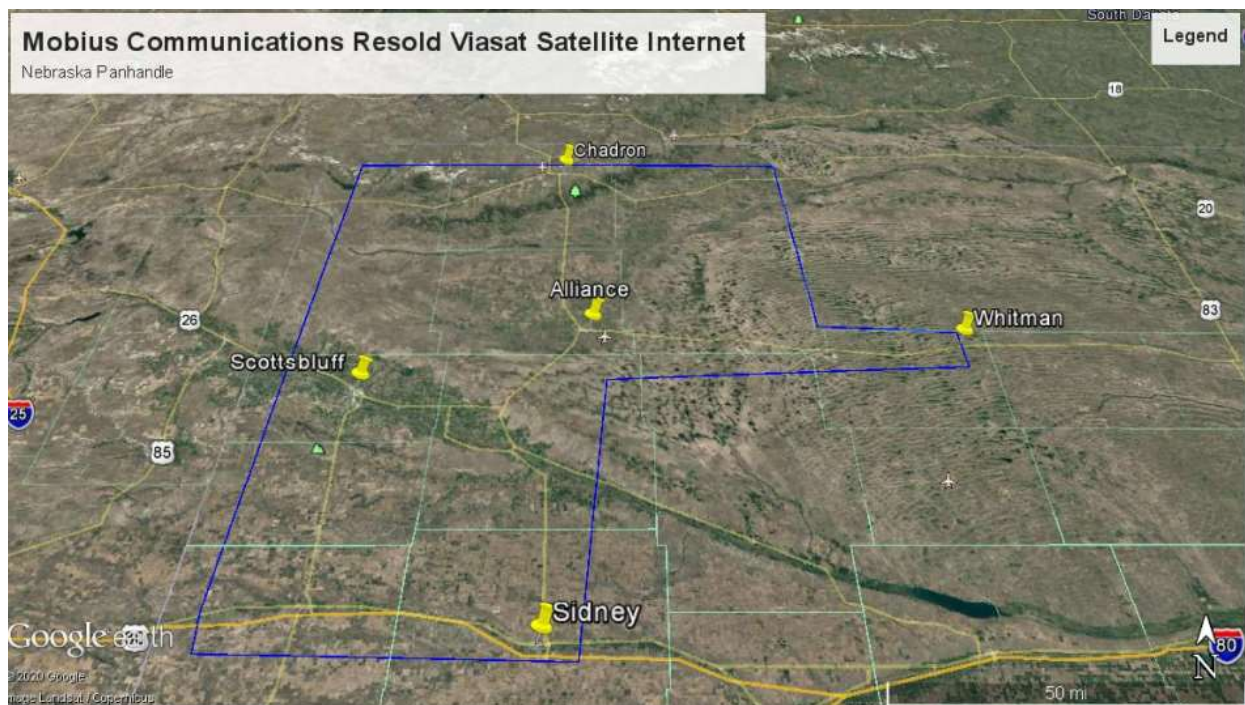
Coverage Maps below:



Wired Coverage Map:



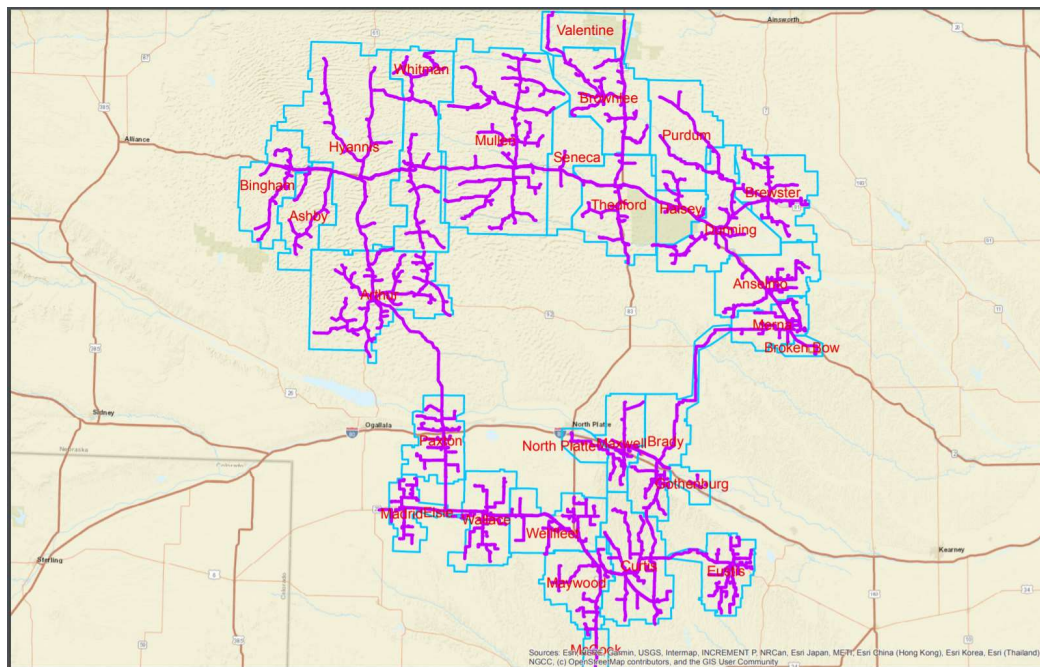
Satellite Coverage Map:





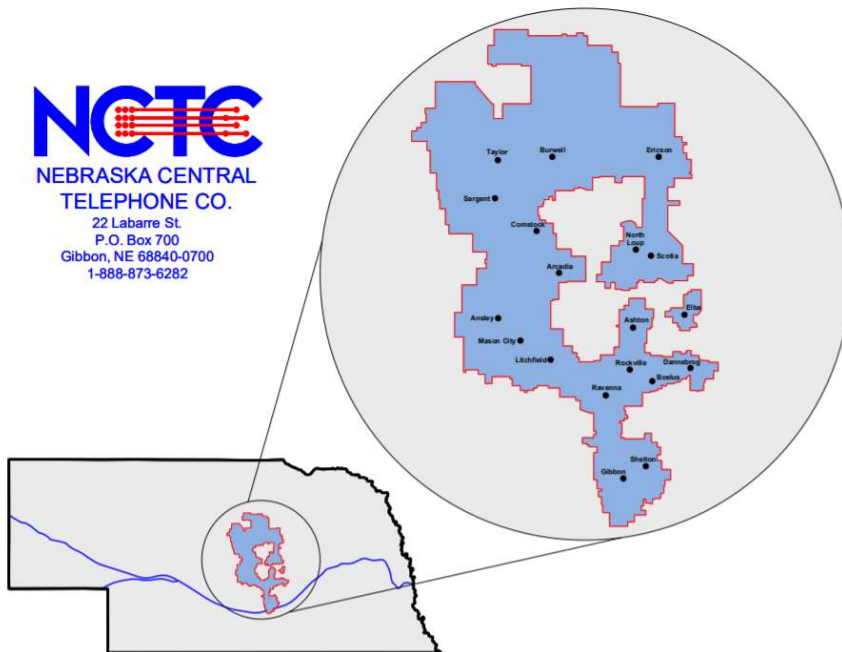
<b>Service Provider:</b>	<b>NebNet / Consolidated Fiber and Service</b>
<b>Contact:</b>	Brian Thompson (402) 489-2728 <a href="mailto:brian.thompson@nebnet.com">brian.thompson@nebnet.com</a>
<b>Service Type:</b>	<b>WIRED Internet Service</b>
<b>Upload/Download Bandwidth Speeds</b>	5 Mbps / 25 Mbps
<b>Service Term Options:</b>	Month-to-Month
<b>One-time Non-recurring cost (NRC)</b>	\$0.00
<b>Monthly recurring cost (MRC)</b>	\$59.95
<b>MRC taxes/fees</b>	\$0.00
<b>Total Monthly cost</b>	\$59.95
<b>Service Description:</b>	Our service is either Fiber based or VDSL technology. We can provide higher speed options found at <a href="https://nebnet.net/internet.php">https://nebnet.net/internet.php</a> . Consolidated is now offering a 50% discount to low income households for internet service and we do not require landline phone service with an internet connection. Several Consolidated service area communities also offer Local Foundation Funds to assist with internet service and equipment for students and classrooms. Consolidated is adding fiber upgrades to approximately 800 locations over the next 6 months.

#### Coverage Map:



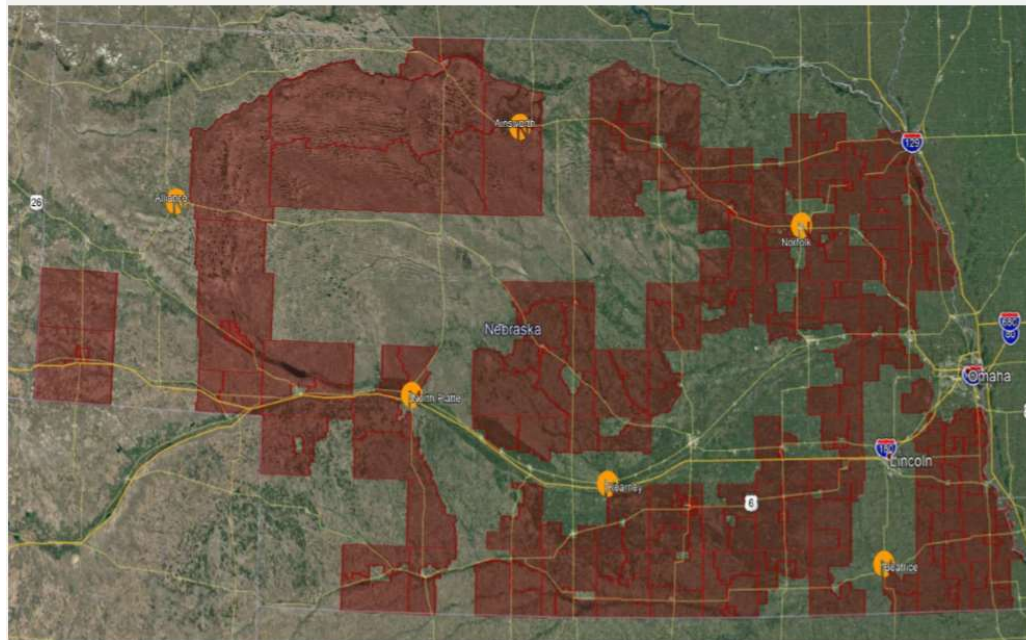
<b>Service Provider:</b>	<b>Nebraska Central Telephone Company</b>
<b>Contact:</b>	Andrew Jader (302) 468-6341 <a href="mailto:ajader@nctc.net">ajader@nctc.net</a>
<b>Service Type:</b>	<b>WIRED Internet Service</b>
<b>Upload/Download Bandwidth Speeds</b>	5 Mbps / 25 Mbps
<b>Service Term Options:</b>	Month-to-Month Annual <sup>1</sup>
<b>One-time Non-recurring cost (NRC)</b>	\$185.00
<b>Monthly recurring cost (MRC)</b>	\$59.95
<b>MRC taxes/fees</b>	\$0
<b>Total Monthly cost</b>	\$59.95
<b>Service Description:</b>	<sup>1</sup> Installation costs are discounted with a term agreement.

Coverage Map:



Service Provider:	Nextlink Internet		
Contact:	Steve Burks (214) 505-1844 <a href="mailto:sburks@team.nxlink.com">sburks@team.nxlink.com</a>		
Service Type:	FIXED WIRELESS Internet Service		
Upload/Download Bandwidth Speeds	7 Mbps / 35 Mbps	2 Mbps / 10 Mbps	3 Mbps / 15 Mbps
Service Term Options:	Month-to-Month Annual Multi-Year		
One-time Non-recurring cost (NRC)	\$0.0	\$0.0	\$0.0
Monthly recurring cost (MRC)	\$49.95 *	\$29.95	\$39.95
MRC taxes/fees	\$0.74	\$0.74	\$0.74
Total Monthly cost	\$50.69	\$30.69	\$40.69
Service Description:	<p>Nextlink will work with any school to design plans and rates that suit their learning needs. These are our current discounted rates for students within our coverage area.</p> <p>\$29.95 per month 10Mbps x 2Mbps for 1-2 students in the home. (published price is \$59.95).</p> <p>\$39.95 per month 15Mbps x 3Mbps for 3 devices or higher-grade learning needs. (published price is \$69.95).</p> <p>\$49.95* per month 35Mbps x 7Mbps for multiple students and or higher learning needs requiring more bandwidth. (published price is \$99.95)</p> <p>*This plan qualifies for Lifeline. Visit <a href="https://nextlinkinternet.com/lp/lifeline/">https://nextlinkinternet.com/lp/lifeline/</a> for details and qualification requirements. Note – No install fee provided no custom installation equipment is required.</p> <p>A Wireless router will be placed in the home and Nextlink will work with the school to authenticate the Chromebook or other school-provided devices are the only ones that can securely log in to the school's network/filtering and firewall. Nextlink will create a master account for the school and work through the school to submit a request for service (verifying this is for their student) and setting up the household as a child account under the school district's master account.</p>		

Coverage Map:



<b>Service Provider:</b>	<b>Pinpoint Communications</b>
<b>Contact:</b>	Liz Reisig (308) 697-3333 <a href="mailto:liz.reisig@pnpt.com">liz.reisig@pnpt.com</a>
<b>Service Type:</b>	<b>WIRED Internet Service</b>
<b>Upload/Download Bandwidth Speeds</b>	20 Mbps / 20 Mbps
<b>Service Term Options:</b>	Month-to-Month
<b>One-time Non-recurring cost (NRC)</b>	\$30.00
<b>Monthly recurring cost (MRC)</b>	\$59.99
<b>MRC taxes/fees</b>	\$0
<b>Total Monthly cost</b>	\$59.99
<b>Service Description:</b>	20M Fiber to the Home Internet, Cambridge NE

## Coverage Map – listed by location:

### Cambridge, NE & some rural areas - Residential Pricing FTTH Internet Service

Speed	Price
20M/20M	\$59.99
100M/100M	\$79.99
300M/300M	\$99.99
1G/1G	\$149.99
NRC - Installation Fee	\$30.00

### Cambridge, NE & some rural areas - Business Pricing FTTH Internet Service

Speed	Price
6M/6M	\$69.99
20M/20M	\$79.99
60M/60M	\$134.99
100M/100M	\$189.99
300M/300M	\$239.99
1G/1G	\$299.99
NRC - Installation Fee	\$30.00

### Bartley, NE & some rural areas - Residential Pricing FTTH Internet Service

Speed	Price
20M/20M	\$59.99
100M/100M	\$79.99
300M/300M	\$99.99
1G/1G	\$149.99
NRC - Installation Fee	\$30.00

### Bartley, NE & some rural areas - Business Pricing FTTH Internet Service

Speed	Price
6M/6M	\$69.99
20M/20M	\$79.99
60M/60M	\$134.99
100M/100M	\$189.99
300M/300M	\$239.99
1G/1G	\$299.99
NRC - Installation Fee	\$30.00

### Oxford, NE - Residential FTTH Internet Service

Speed	Price
25M/3M	\$44.99
50M/50M	\$49.99
500M/500M	\$69.99
1 GIG/1 GIG	\$89.99
NRC - Installation Fee	\$0.00

### Oxford, NE - Business FTTH Internet Service

Speed	Price
50M/50M	\$59.99
500M/500M	\$79.99
1 GIG/1 GIG	\$99.99
NRC - Installation Fee	\$0.00

### Gothenburg, NE & some rural areas - Residential FTTH Internet Service

Speed	Price
30M/30M	\$29.99
100M/100M	\$49.99
500M/500M	\$59.99
1 GIG/1 GIG	\$89.99
NRC - Installation Fee	\$0.00

### Gothenburg, NE & some rural areas - Business FTTH Internet Service

Speed	Price
50M/50M	\$59.99
500M/500M	\$79.99
1 GIG/1 GIG	\$99.99
NRC - Installation Fee	\$0.00

### Alma, Beaver City, & Republican City, NE & Rural Areas (Southern Valley School area) - Residential FTTH Internet Service

Speed	Price
50M/50M	\$39.99
500M/500M	\$59.99
1 GIG/1 GIG	\$89.99
NRC - Installation Fee	\$0.00

### Alma, Beaver City, & Republican City, NE - Business FTTH Internet Service

Speed	Price
50M/50M	\$59.99
500M/500M	\$79.99
1 GIG/1 GIG	\$99.99
NRC - Installation Fee	\$0.00

### Indianola, NE Cable Modem Internet Service

Speed	Price
5M/1M	\$39.99
15M/3M	\$49.99
25M/3M	\$59.99
50M/5M	\$79.99
NRC - Installation Fee	\$30.00

### McCook, NE DSL Internet Service

Speed	Price
8M	\$44.95
12M	\$54.95

### McCook, NE FTTH Internet Service

Speed	Price
30M/30M	\$29.99
400M/400M	\$59.99
1 GIG/1 GIG	\$89.99



<b>Service Provider:</b>	<b>Pointenet</b>
<b>Contact:</b>	Robert Eades, Jr. (402) 515-4442 <a href="mailto:beades@pointenet.com">beades@pointenet.com</a>
<b>Service Type:</b>	<b>FIXED WIRELESS Internet Service</b>
<b>Upload/Download Bandwidth Speeds</b>	5 Mbps / 25 Mbps
<b>Service Term Options:</b>	Month-to-Month Annual Multi-year contract
<b>One-time Non-recurring cost (NRC)</b>	\$99.00
<b>Monthly recurring cost (MRC)</b>	\$54.99
<b>MRC taxes/fees</b>	\$2.68
<b>Total Monthly cost</b>	\$57.67
<b>Service Description:</b>	Fixed Wireless microwave at 5Ghz

Coverage Map:

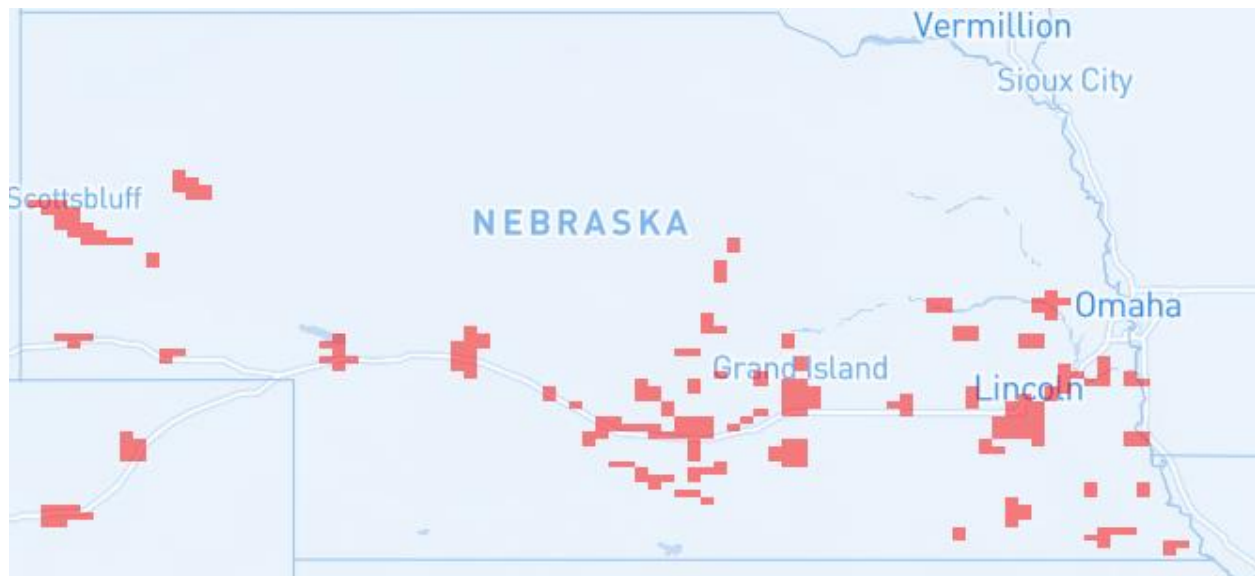
#### NEBRASKA AREAS:

Ashland  
Ceresco  
Colon  
Fremont  
Hooper  
Mead  
North Bend  
Scribner  
Wahoo  
Waterloo



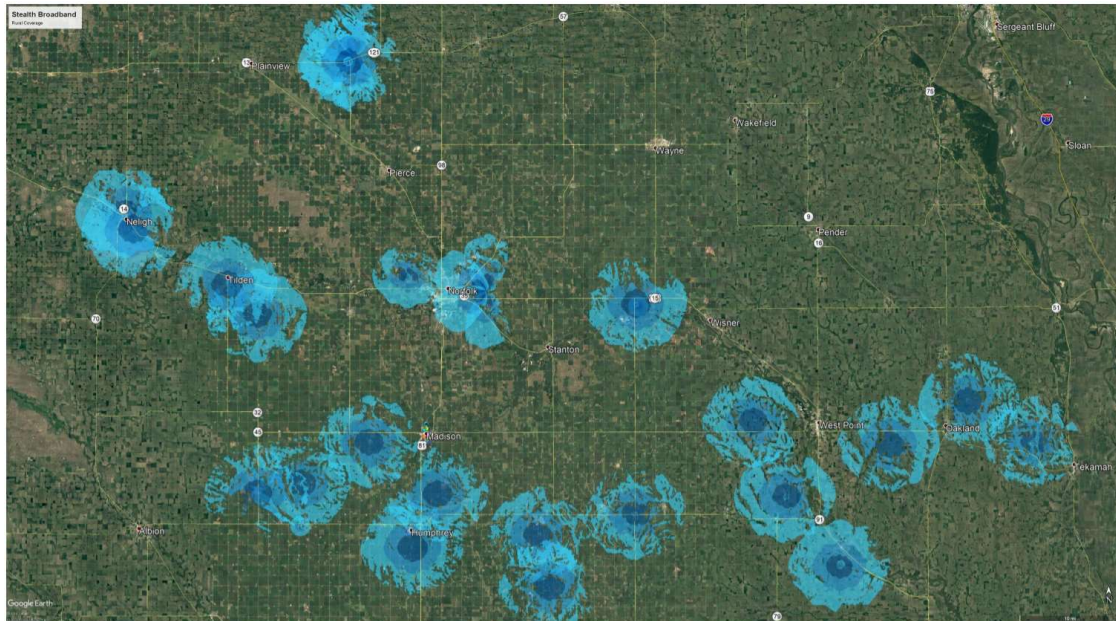
<b>SERVICE PROVIDER:</b>	<b>Spectrum Communications</b>
<b>Contact:</b>	Leah Carey, Major Account Manager, 13545 Barrett Parkway, St. Louis, MO 63021 – 636.328.6608 <a href="mailto:Leah.Carey@charter.com">Leah.Carey@charter.com</a>
<b>Service Type:</b>	<b>WIRED Internet Service</b>
<b>Upload/Download Bandwidth Speeds</b>	5 Mbps / 50 Mbps up to 35 Mbps / 1000 Mbps
<b>Service Term Options:</b>	Month-to-month
<b>One-time Non-recurring cost (NRC)</b>	\$0
<b>Monthly recurring cost (MRC)</b>	\$29.99 - \$249.99
<b>MRC taxes/fees</b>	\$0
<b>Total Monthly cost</b>	\$29.99 - \$249.99
<b>Service Description:</b>	Unlimited internet usage with no data caps or speed throttling; Cable modem, WiFi and self-installation kit provided with every end-user connection; optional professional installation available, wireline connectivity with over 99.9% reliability; 24/7/365 technical support.

Coverage Map:

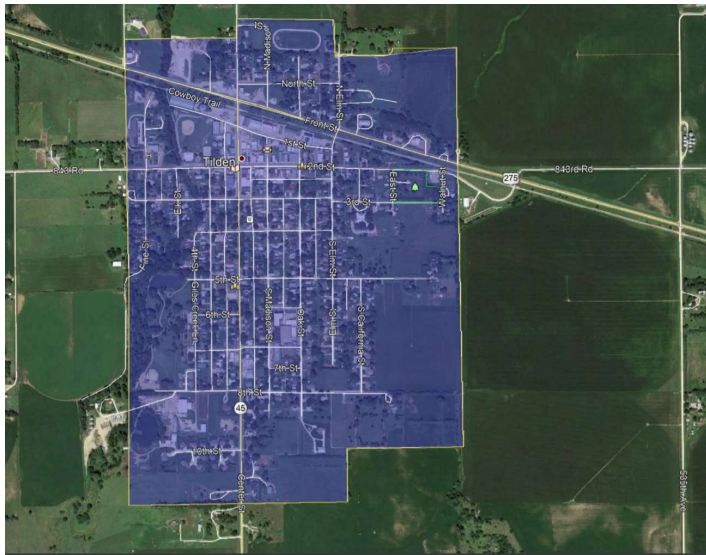


Service Provider:	Stealth Broadband	
Contact:	Klinton Arnold (402) 347-1010 <a href="mailto:Klint.Arnold@StealthBroadband.com">Klint.Arnold@StealthBroadband.com</a>	
Service Type:	FIXED WIRELESS Internet Service (see map 1)	
Upload/Download Bandwidth Speeds	10 Mbps / 100 Mbps	20 Mbps / 200 Mbps
Service Term Options:	Month-to-Month Annual Multi-Year	
One-time Non-recurring cost (NRC)	\$0.0	\$0.0
Monthly recurring cost (MRC)	\$49.95	\$89.95
MRC taxes/fees	\$1.50	\$2.70
Total Monthly cost	\$51.45	\$92.65
Service Description:	Stealth Broadband offers a fiber-fed fixed wireless solution that is able to deliver services between 10/100 and 20/200 Mbps	
Service Type:	WIRED Internet Service (see map 2)	
Upload/Download Bandwidth Speeds	20 Mbps / 200 Mbps	
Service Term Options:	Month-to-Month Annual Multi-Year	
One-time Non-recurring cost (NRC)	\$0.0	
Monthly recurring cost (MRC)	\$49.95	
MRC taxes/fees	\$1.50	
Total Monthly cost	\$51.45	
Service Description:	Stealth Broadband offers a Fiber To The Home (FTTH) in Tilden NE.	

Coverage Map 1:



Coverage Map 2:

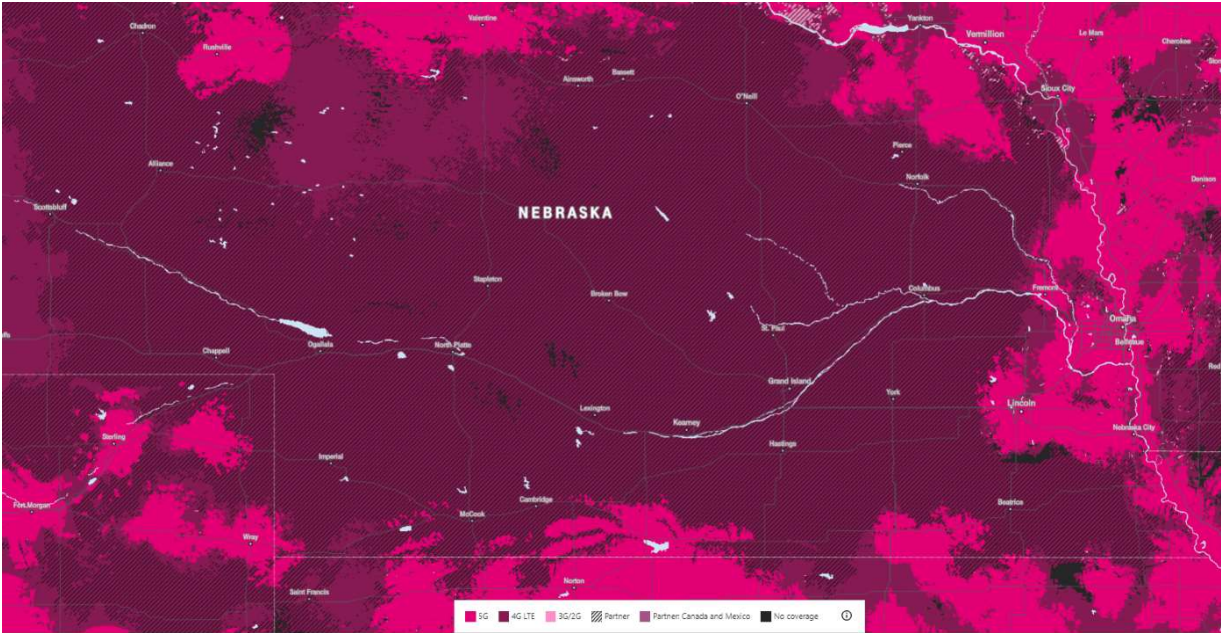


Service Provider:	<b>T-Mobile USA</b>
Contact:	James Spillane (585) 230-7422 <a href="mailto:jim.a.spillane@t-mobile.com">jim.a.spillane@t-mobile.com</a>
Service Type:	<b>MOBILE CELLULAR Internet Service</b>
Upload/Download Bandwidth Speeds	10 Mbps / 28 Mbps (average)
Service Term Options:	Month-to-Month Annual Multi-Year
One-time Non-recurring cost (NRC)	\$0
Monthly recurring cost (MRC)	\$20.00
MRC taxes/fees	\$0
Total Monthly cost	\$20.00
Service Description:	<p><i>K-12 Pricing</i> Three Options available, all include a free hotspot: \$15 a month per device on a two year commitment \$20 a month per device on a one year commitment \$25 a month per device on a month to month commitment</p> <p>We currently support 3G, 4G, and 5G services in the State of Nebraska for phone and data services. For more detailed coverage information please visit <a href="https://www.t-mobile.com/coverage/coverage-map">https://www.t-mobile.com/coverage/coverage-map</a>. You can also reach out to us directly with an questions.</p> <p><i>**Given the nature of Cellular Service we are unable to make a bandwidth guarantee. However, we expect to meet and exceed the requirement in areas where T-Mobile has native coverage.</i></p>
Service Type:	<b>MOBILE CELLULAR Internet Service</b>
Upload/Download Bandwidth Speeds	10 Mbps / 28 Mbps (average)
Service Term Options:	Month-to-Month <sup>1</sup> Annual Multi-Year
One-time Non-recurring cost (NRC)	\$0
Monthly recurring cost (MRC)	\$29.75
MRC taxes/fees	\$1.16
Total Monthly cost	\$30.91
Service Description:	<p><i>Pricing for Teachers, Staff, and Higher education.</i></p> <p><sup>1</sup> Month to month is available but equipment must be purchased at full retail.</p> <p>We currently support 3G, 4G, and 5G services in the State of Nebraska for phone and data services. For more detailed coverage information please visit <a href="https://www.t-mobile.com/coverage/coverage-map">https://www.t-mobile.com/coverage/coverage-map</a>. You can also reach out to us directly with an questions.</p>



	<p><b>**Given the nature of Cellular Service we are unable to make a bandwidth guarantee. However, we expect to meet and exceed the requirement in areas where T-Mobile has native coverage.</b></p>
--	--

Coverage Map:



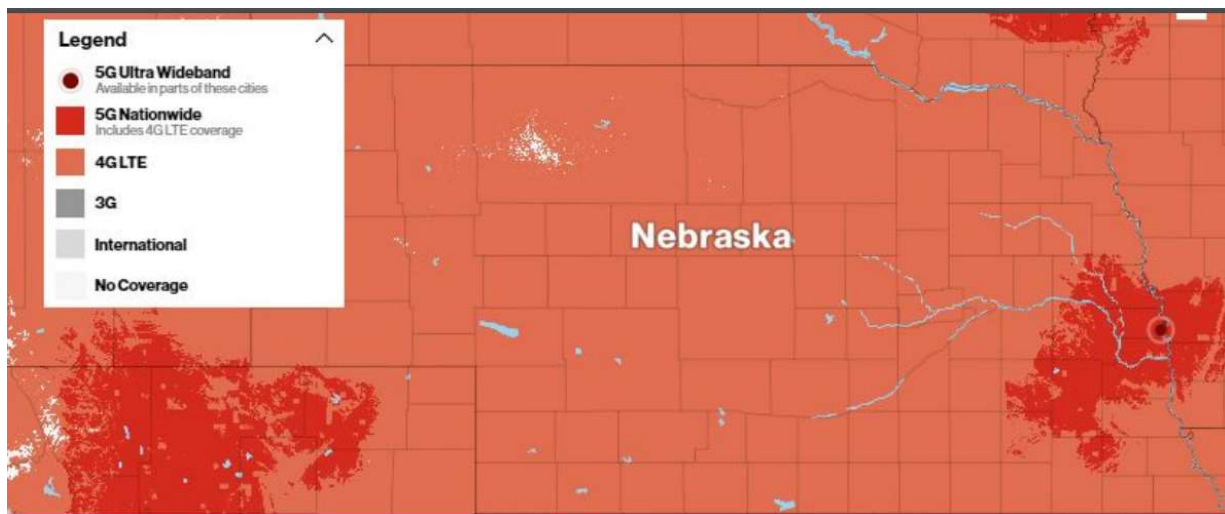
<b>Service Provider:</b>	<b>US Cellular</b>
<b>Contact:</b>	Becki Keeshan (402) 953-9911 <a href="mailto:becki.keeshan@uscellular.com">becki.keeshan@uscellular.com</a>
<b>Service Type:</b>	<b>MOBILE CELLULAR Internet Service</b>
<b>Upload/Download Bandwidth Speeds</b>	US cellular is proud to provide 4G/LTE data services in Nebraska, with uplink and downlink speeds that are consistent with 4G LTE standards and have started deployment of our 5G network. U.S. Cellular has initiated 5G network deployment with aggressive plans to expand our 5G footprint over the next several years. We have acquired the necessary 5G spectrum across our national footprint, and we have introduced 5G capable devices with the anticipated roll out of other manufacturer smartphones and devices in 2020 and beyond. U.S. Cellular is deploying our 5G network using low, mid and high band spectrum as an overlay to the 4G network. Our 5G network will address a wide variety of use cases including fixed wireless and other mobility-based technology needs.
<b>Service Term Options:</b>	Annual Multi-Year
<b>One-time Non-recurring cost (NRC)</b>	\$0.01
<b>Monthly recurring cost (MRC)</b>	\$25.00
<b>MRC taxes/fees</b>	\$2.99
<b>Total Monthly cost</b>	\$27.99
<b>Service Description:</b>	The following shows our pricing model depending upon the options you choose. Education Only Hotspot Plan - 12 Months: MRC \$25, Terms 12 months, Hotspot Price \$99.99. *Slows to 3G speeds starting at 20GB Education Only Hotspot Plan - 24 Months: MRC \$25, Terms 24 months, Hotspot Price \$0.01. *Slows to 3G speeds starting at 20GB Government Only UNL Data CD Plan 9-24-20: MRC \$39.00, Terms 12 months, Hotspot Price \$0.01. *Slows to 3G speeds starting at 40GB, heavy data user policy applied at 100 GB.

#### Coverage Map:



<b>Service Provider:</b>	<b>Verizon Wireless</b>
<b>Contact:</b>	Kelli Zavala (402) 450-9990 <a href="mailto:kelli.zavala@verizonwireless.com">kelli.zavala@verizonwireless.com</a>
<b>Service Type:</b>	<b>WIRELESS Internet Service</b>
<b>Upload/Download Bandwidth Speeds</b>	2-5 Mbps / 5-12 Mbps
<b>Service Term Options:</b>	Subject to contract
<b>One-time Non-recurring cost (NRC)</b>	\$60.00
<b>Monthly recurring cost (MRC)</b>	\$39.99
<b>MRC taxes/fees</b>	\$0
<b>Total Monthly cost</b>	\$39.99
<b>Service Description:</b>	<p>Verizon's comprehensive cost-effective Distance Learning Initiative would deliver wireless broadband to Nebraska's K-12 public school students (Verizon notes that this response and proposal is limited to K-12 Nebraska public schools and extend to no other institutions).</p> <p>We innovate constantly to help our government customers do business quicker and smarter. Verizon (or "PROVIDER") can help provide continuity for Nebraska public school districts and their students, providing:</p> <ul style="list-style-type: none"> <li>• Technology: Verizon's distance learning services and solutions provide secure, effective distance learning tools for uninterrupted K-12 public education.</li> <li>• Connectivity: With Verizon's reliable, secure networks, K-12 public school administrators can give teachers and students the connectivity and collaboration tools they need for effective distance learning.</li> <li>• Training: Your Verizon account team(s) can create a training program with your assistance and guidance. This training program could include on-site training (where possible), webinars, and online training.</li> </ul> <p>Contact your Verizon Government Account Manager for more details.</p>

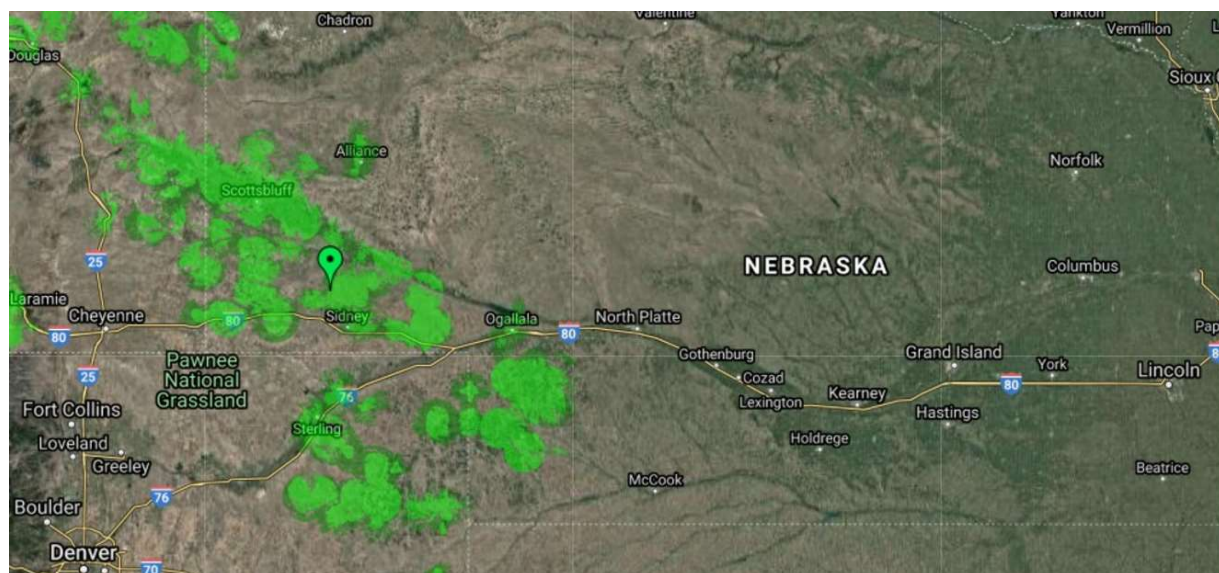
#### Coverage Map:



<b>Service Provider:</b>	<b>VistaBeam</b>
<b>Contact:</b>	Jarred Berger (308) 635-9434 <a href="mailto:jarred@vistabeam.net">jarred@vistabeam.net</a>
<b>Service Type:</b>	<b>FIXED WIRELESS Internet Service</b>
<b>Upload/Download Bandwidth Speeds</b>	5 Mbps / 50 Mbps
<b>Service Term Options:</b>	Month-to-Month Annual Multi-Year
<b>One-time Non-recurring cost (NRC)</b>	\$199.00
<b>Monthly recurring cost (MRC)</b>	\$54.95
<b>MRC taxes/fees</b>	\$0
<b>Total Monthly cost</b>	\$54.95
<b>Service Description:</b>	Vistabeam empowers underserved rural communities and customers by providing fast reliable internet service. Truly unlimited data, no contracts, and extraordinary customer care are all part of the Vistabeam experience. We provide service in the following Nebraska Counties: Scotts Bluff, Banner, Garden, Sioux, Box Butte, Cheyenne, Deuel, Perkins, Chase, Kimball, Keith, Morrill, Dundy.
<b>Service Type:</b>	<b>FIXED WIRELESS Internet Service</b>
<b>Upload/Download Bandwidth Speeds</b>	5 Mbps / 25 Mbps
<b>Service Term Options:</b>	Month-to-Month Annual Multi-Year
<b>One-time Non-recurring cost (NRC)</b>	\$199.00
<b>Monthly recurring cost (MRC)</b>	\$43.95
<b>MRC taxes/fees</b>	\$0
<b>Total Monthly cost</b>	\$43.95
<b>Service Description:</b>	Vistabeam empowers underserved rural communities and customers by providing fast reliable internet service. Truly unlimited data, no contracts, and extraordinary customer care are all part of the Vistabeam experience. We provide service in the following Nebraska Counties: Scotts Bluff, Banner, Garden, Sioux, Box Butte, Cheyenne, Deuel, Perkins, Chase, Kimball, Keith, Morrill, Dundy.

Coverage Map:

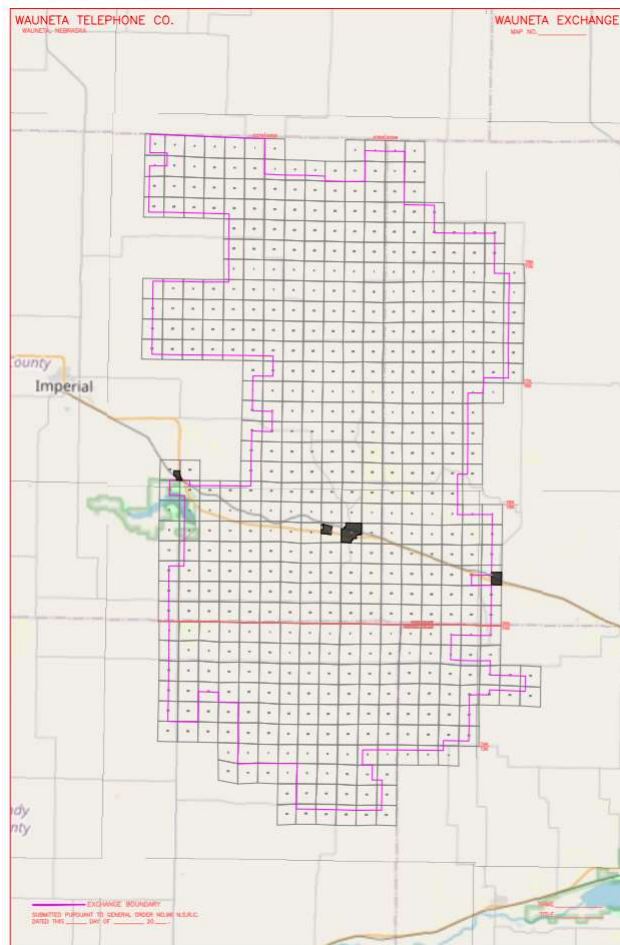






<b>Service Provider:</b>	<b>Wauneta Telephone</b>
<b>Contact:</b>	Linda McKain (308) 423-2000 <a href="mailto:lmckain@bwtelcom.net">lmckain@bwtelcom.net</a>
<b>Service Type:</b>	<b>WIRED Internet Service</b>
<b>Upload/Download Bandwidth Speeds</b>	25 Mbps / 25 Mbps
<b>Service Term Options:</b>	Month-to-Month
<b>One-time Non-recurring cost (NRC)</b>	\$0.0
<b>Monthly recurring cost (MRC)</b>	\$49.95
<b>MRC taxes/fees</b>	\$0.0
<b>Total Monthly cost</b>	\$49.95
<b>Service Description:</b>	25/25 package is offered where we have fiber

Coverage Map:



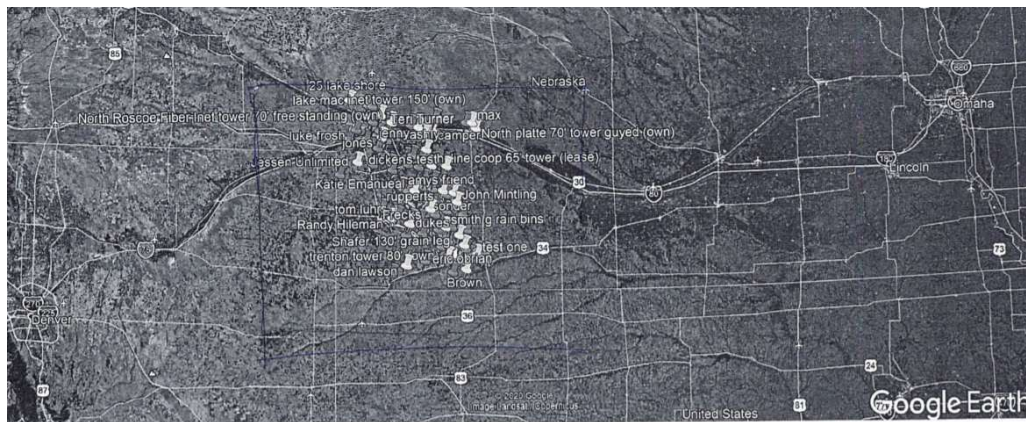
<b>Service Provider:</b>	<b>Windbreak Cable</b>
<b>Contact:</b>	William D. Bauer (308) 436-4650 <a href="mailto:bill@intertech.net">bill@intertech.net</a>
<b>Service Type:</b>	<b>WIRED Internet Service</b>
<b>Upload/Download Bandwidth Speeds</b>	5 Mbps / 60 Mbps
<b>Service Term Options:</b>	Month-to-Month
<b>One-time Non-recurring cost (NRC)</b>	\$50.00
<b>Monthly recurring cost (MRC)</b>	\$99.95
<b>MRC taxes/fees</b>	\$7.49
<b>Total Monthly cost</b>	\$102.27
<b>Service Description:</b>	Windbreak Cable is a Broadband High Speed Internet provider in the western Nebraska communities of Harrison and Oshkosh. Windbreak Cable uses a coaxial distribution network, which passes every residence within the city limits of these two communities and originates at a local Headend. Windbreak Cable offers several Internet subscription packages, ranging in Upload and Download throughputs and monthly rates depending on location, from \$29.95 / month to \$99.95 / month. Windbreak Cable's MAXIMUM Internet throughput and monthly rate are listed below. Pricing for minimum school throughputs (5Mbps x 5Mbps) is TBD.

#### Coverage Map:



<b>Service Provider:</b>	<b>Wirelessinet LLC</b>
<b>Contact:</b>	Jared Blackman (308) 285-3312 <a href="mailto:jared@wirelessinet.net">jared@wirelessinet.net</a>
<b>Service Type:</b>	<b>FIXED WIRELESS Internet Service</b>
<b>Upload/Download Bandwidth Speeds</b>	15 Mbps / 15 Mbps
<b>Service Term Options:</b>	Month-to-Month Annual Multi-Year contracts
<b>One-time Non-recurring cost (NRC)</b>	\$100.00
<b>Monthly recurring cost (MRC)</b>	\$65.00
<b>MRC taxes/fees</b>	\$0.0
<b>Total Monthly cost</b>	\$65.00
<b>Service Description:</b>	Wirelessinet offers a fixed microwave connection using different frequencies in different areas depending on population and demand on bandwidth. 10% percent discounts for every additional service added to the same account. Take \$5 off every month for folks who sign up for auto pay.

#### Coverage Map:



South West Nebraska.  
 Culbertson, Palisade, Stratton, Waynes, Hays center, Wallace, Madrid, Grant,  
 Ogallala, Roscoe, Bruce, Poncha, Sutherland, North Platte,  
 and all Rural areas in between.

## Service Provider Directory

COMPANY	PRIMARY CONTACT	ALTERNATE
<b>ALLO Communications, LLC</b>	ALLO Inside Sales Allo-insidesales@allophone.net (402) 480-6550	
<b>Applied Connective Technologies</b>	Ed Knott eknott@appliedconnective.com (402) 395-6924	Joann Porter jporter@appliedconnective.com (402) 395-6924
<b>AT&amp;T</b>	Kevin Ford kf572w@att.com (636) 591-4696	Darleah Newhart dn459t@att.com (573) 286-9576
<b>Benkelman Telephone Co., Inc.</b>	Linda McKain lmckain@bwtelcom.net (308) 423-2000	Jenna Burrell jenna@bwtelcom.net (308) 423-2000
<b>Big Red Communications L.L.C.</b>	Andrew Powell andy@bigredne.com (402) 380-7620 EXT 499	Jeannette Powell jeanne@bigredne.com (402) 380-7620 EXT 117
<b>Center Cable Co.</b>	Marty Callahan martycallahan@centercable.tv (308) 223-0282 / (308) 428-2915	
<b>Cozad Telephone Company</b>	Dreu Young dyoung.ctc@cozadtel.net (308) 784-4044	Daren Chrisinger daren.ctc@cozadtel.net (308) 784-4044
<b>Dalton Telecommunications, Inc.</b>	Matt Moore mmoore@usch.com (308) 377-2556	Deborah Rand drand@usch.com (603) 472-9786
<b>Great Plains Communications, LLC.</b>	Jeff Mason jmason@gpcom.com (402) 456-6467 / 402-533-3464	Michelle Luetticke mluetticke@gpcom.com (402) 456-6469
<b>Hamilton Telecommunications</b>	Kiley James kiley.james@hamiltontel.com (402) 694-5101	Jim Ediger jim.ediger@hamiltontel.com (402) 694-7267
<b>Hartman Telephone Exchanges, Inc.</b>	Linda McKain lmckain@bwtelcom.net (308) 423-2000	Jenna Burrell jenna@bwtelcom.net (308) 423-2000
<b>Mobius Communications Company</b>	Tonya Mayer tonya@bbc.net (308) 487-5500	Kory Haas kory@bbc.net (308) 487-5500
<b>Nebnet/Consolidated Companies, Inc.</b>	Brian Thompson brian.thompson@nebnet.com (402) 489-2728 / (308) 645-9010	Julie Steinhoff julie.steinhoff@nebnet.com (402) 489-2728 / 402-430-6617
<b>Nebraska Central Telephone Company</b>	Andrew Jader ajader@nctc.net (308) 468-6341	Jennifer Samuleson customer-service@nctc.net (308) 468-6341
<b>Nextlink Internet</b>	Steve Burks sburks@team.nxlink.com (214) 505-1844	Katy Keenie kkeenie@team.nxlink.com (682) 200-6213
<b>Pinpoint Communications</b>	Liz Reisig liz.reisig@pnpt.com (308) 697-3333	Tom Shoemaker tom.shoemaker@pnpt.com (308) 697-3333
<b>Pointenet</b>	Robert Eades, Jr. beades@pointenet.com (402) 515-4442	Jay Glaser jay.pointenet@gmail.com (402) 637-8415
<b>Spectrum Communications</b>	Leah Carey Leah.carey@charter.com (636) 328-6608	

<b>Stealth Broadband</b>	Klinton Arnold Klint.Arnold@StealthBroadband.com (402) 347-1010	Kira Buol kira.buol@stealthbroadband.com (402) 347-1010
<b>T-Mobile USA</b>	Luis Martinez Luis.Martinez1501@t-mobile.com (316) 644-6559	Aaron Hughes Aaron.Hughes@T-Mobile.com (913) 927-0509
<b>US Cellular Services, LLC</b>	Becki Keeshan becki.keeshan@uscellular.com (402) 953-9911	Melissa Chapman melissa.chapman@uscellular.com (402) 917-0032
<b>Verizon Wireless</b>	Kelli Zavala kelli.zavala@verizonwireless.com (402) 450-9990	Daniel Aldaco daniel.aldaco@verizonwireless.com (913) 344-2870
<b>Vistabeam</b>	Jarred Berger jarred@vistabeam.net (308) 635-9434	
<b>Wauneta Telephone Company</b>	Linda McKain lmckain@bwtelcom.net (308) 423-2000	Jenna Burrell jenna@bwtelcom.net (308) 423-2000
<b>Windbreak Cable</b>	William D. Bauer bill@intertech.net (308) 436-4650	Paul Schauer paul@intertech.net (308) 436-4650
<b>Wirelessinet LLC</b>	Jared Blackman jared@wirelessinet.net (308) 285-3312 / (308) 883-1014	Randy Miner Randy@wirelessinet.net (308) 285-3312